

Kirkpatrick.



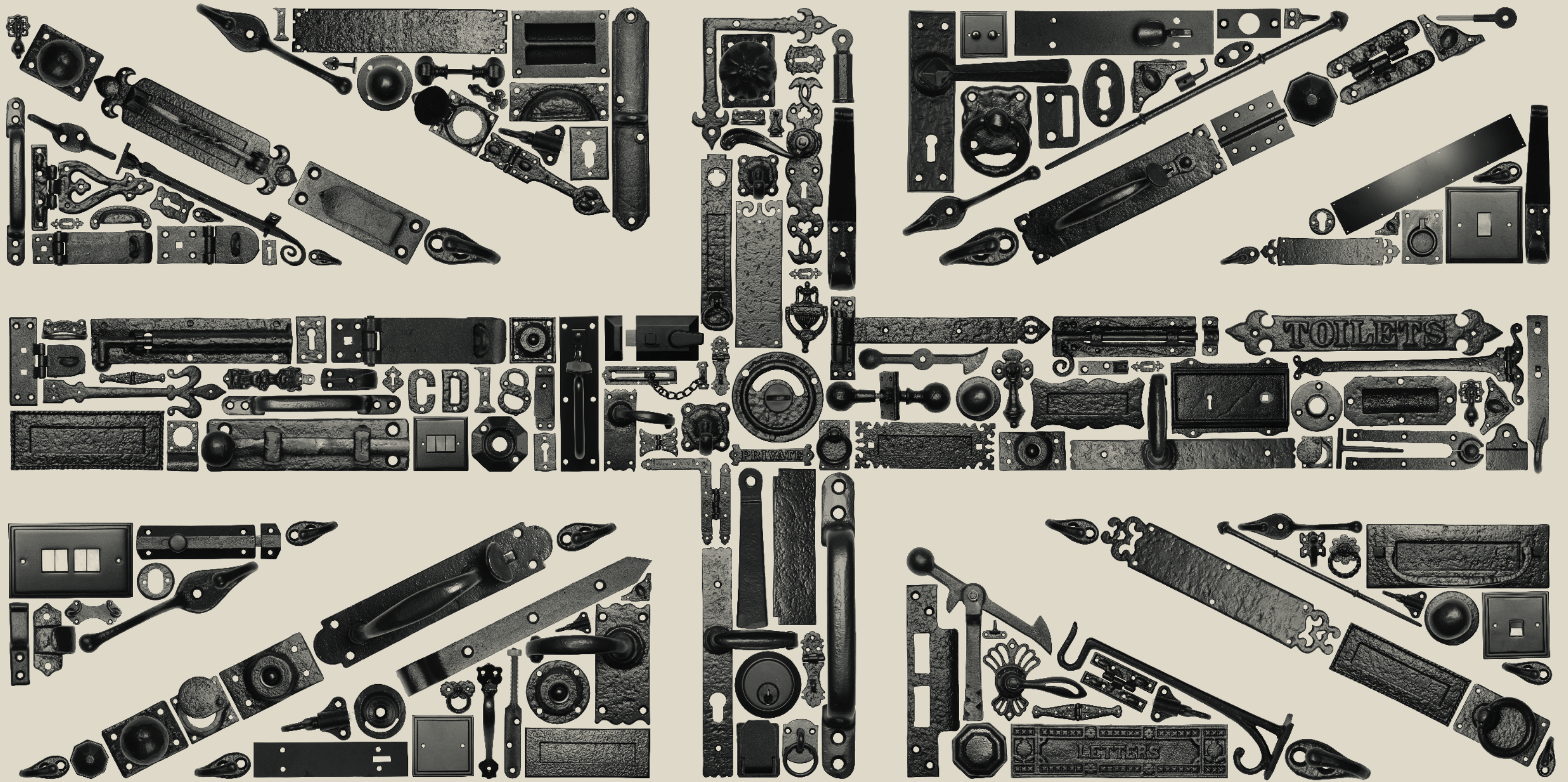
# CONTENTS

02	Handmade and British	90	KIRKPATRICK IN SITU
05	Our history		
06	Why choose us?	94	BLACKSMITH FORGE RANGE
08	Ranges and finishes		
		96	Door furniture
10	BLACK IRON RANGE	100	Window furniture
<b>12</b>	<b>Door and gate furniture</b>	102	Hooks and handles
12	Lever handles		
20	Hinges and hinge fronts	104	CAST BRASS RANGE
26	Thumb and gate latches	105	Door furniture
32	Letter plates	112	Window furniture
35	Bolts and locks	114	Hooks, handles and locks
42	Pull handles		
46	Door knobs	116	RAWNSLEY RANGE
50	Door knockers		
54	Door accessories	122	BESPOKE PRODUCTS
<b>64</b>	<b>Gate fittings</b>		
64	Gate stops, catches, locking bars/hasp and staples	123	REFURBISHING AND TAKING CARE OF YOUR PRODUCTS
<b>66</b>	<b>Window furniture</b>		
66	Casement fasteners	124	INSPIRATION
74	Casement stays		
<b>78</b>	<b>Cabinet and drawer furniture</b>	125	CUSTOMER GALLERY
79	Handles		
80	Knobs and pulls	126	WHERE TO BUY
<b>82</b>	<b>Home accessories</b>		
82	Hooks and brackets	127	GLOSSARY
86	Lighting		
88	Patio and fireside	128	PRODUCT INDEX

Front cover image: Door knocker 782, centre door knob 3064, lever door handle 6054 and letter plate 1083 all in Antique Black

*We reserve the right to change, add or withdraw items from our range at any time.*







# HANDMADE AND BRITISH FROM START TO FINISH

We have more than 160 years' experience, crafting beautiful ironwork under the same roof in Walsall where it all began back in 1855.

## OUR HISTORY



Our business was founded by William Kirkpatrick, Esq. J. P. (1817-1887) in Walsall in 1855, and carried on for many years in his name and direction.

His son, Vincent Kirkpatrick, succeeded his father and presided over the incorporation of the business as a Limited Company in 1901. Upon incorporation, many loyal and long serving employees were given a shareholding, starting a tradition which continues to this day.

Many of the descendants of those first shareholders still retain their interest in the Company and the Kirkpatrick family still also retain a shareholding.

### Adapting to change

While looking back through our large collection of product catalogues dating back to the 19th century, much of our present window and door furniture remains true to our roots and has changed little over the past 160 years.

But we've not stood still - apart from during both World War I and II, when production was interrupted to concentrate on the war effort, we've been constantly evolving to reflect changing tastes, fashions and technology. For example, many of our window fasteners now include secure locking mechanisms and we also supply products to suit modern UPVC windows and doors.

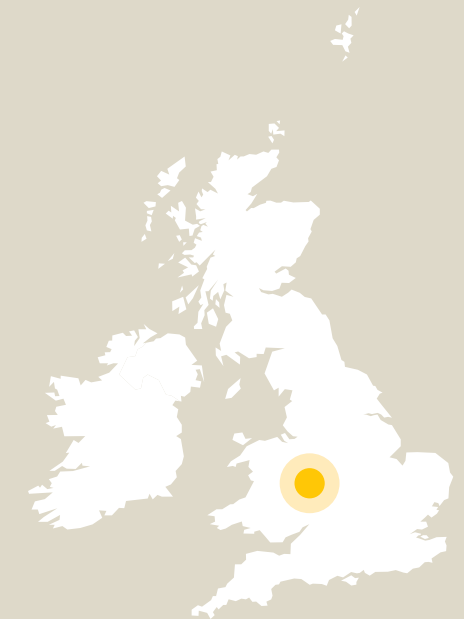


### The last UK foundry

In the mid-20th century there were many jobbing foundries in the Midlands and the Black Country, however most have fallen by the wayside owing to increasing international competition from India and the Far East.

As a result, we are immensely proud to be the only manufacturer of traditional black ironmongery left in the UK who genuinely pours their own metal.

Our continued success is due to the world-class quality of our genuinely handmade products and our ability to adapt and develop our range to suit the needs of an ever changing world.





## FROM POURING TO PACKING...

...each stage is performed by our own fair hands – making us the only ironwork company whose products are genuinely handmade in Britain from start to finish.



### STAGE 1 PATTERN MAKING

Dave gets the ball rolling by creating the distinctive patterns from which every Kirkpatrick product is born.



### STAGE 2 MOULDING

Chris skilfully makes the moulds by pressing the patterns into a special box filled with black sand.



### STAGE 3 MELTING

Paul adds pig iron to the induction furnace, which is heated to a melting point of 1,200 °C.



### STAGE 4 COLLECTING

Kevin collects the molten iron as it is poured from the tipped furnace into pre-heated pots.



### STAGE 5 POURING

Ransford needs a steady hand to evenly pour the molten iron into different moulds.



### STAGE 6 COOLING

David removes the heavy weights from moulds (which stop the iron exploding) and it begins to cool.



### STAGE 7 REMOVING

Dave moves the moulds and taps off the sand, to reveal the fresh new casting underneath.



### STAGE 8 SHOT BLASTING

Stuart puts the castings with metallic shot into a barrelling machine to smooth away rough edges.



### STAGE 9 ANNEALING

Mark places the castings into pots which are heated to 1,000 °C – making the iron strong yet malleable.



### STAGE 10 SORTING

Martin takes the castings, which have undergone further shot blasting, and separates each into storage boxes.



### STAGE 11 GRINDING

David grinds away the rough edges and unwanted seams to give the castings a smarter finish.



### STAGE 12 FILING

Bill completes the smoothing and rounding of each individual piece with a quick file down.



### STAGE 13 DRILLING

Sandra hand drills individual holes on each casting for accuracy and to give a high quality, durable finish.



### STAGE 14 ASSEMBLING

Dave assembles a range of our products by attaching, hammering and expertly screwing them together.



### STAGE 15 DIPPING

Michael makes sure the castings never rust by hanging and dipping each one in protective paint.



### STAGE 16 COATING

Dean sprays our products with a powder coating for a great finish, before baking them again for extra durability.



### STAGE 17 PACKING

Tracy makes sure every product is packed with the same care and attention that goes into making them.



### STAGE 18 SENDING

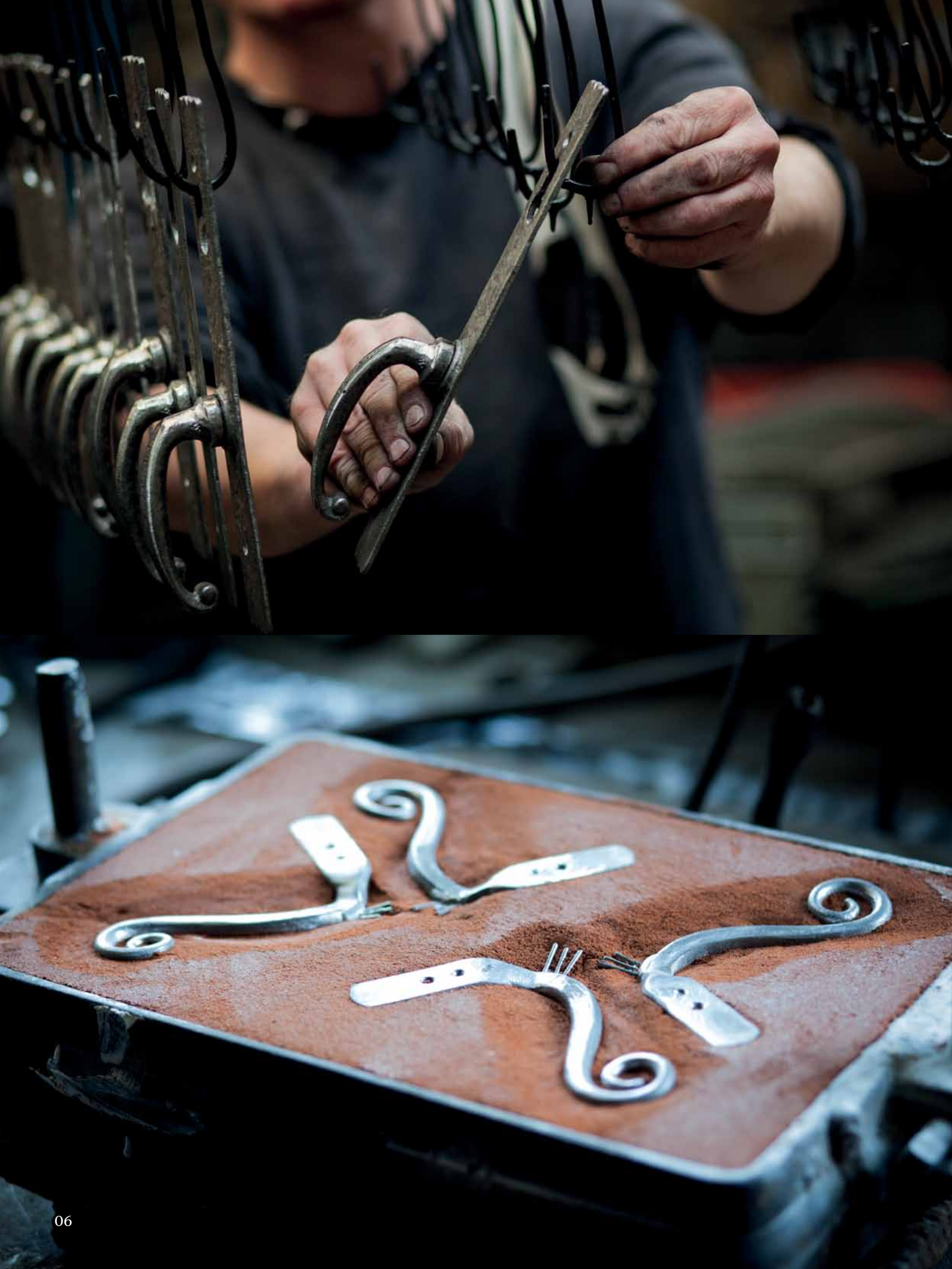
Mark works hard to ensure every customer receives their Kirkpatrick products in good time.



### STAGE 19 ENJOYING

It takes over six weeks to create every Kirkpatrick product, each providing a lifetime of enjoyment.





## WHY CHOOSE US?

**We are the last remaining British foundry to genuinely make our products from start to finish by hand in the UK.**

We believe our 160-year tradition for producing handmade ironmongery and utilising the skills of our local workforce, gives Kirkpatrick products a style, authenticity and longevity that cannot be matched by less expensive, poor quality imitations.

It is a combination of our experience, expertise and dedication to producing ironwork of the utmost character which means that you will not find better quality or value anywhere else in the world.

### **Our heritage**

Much of our black iron door and window furniture is based on patterns (designs) used by our foundry since its inception in the 19th century. Our workforce today uses essentially the same finishing and assembly techniques as back then, which have been handed down and refined through generations.

It's this history which helps us create durable and beautiful ironwork products that have an integrity and authenticity which is second to none.

### **Our craft**

Each and every piece of our ironmongery is crafted by hand over a six week period, ensuring each door handle and window latch is unique and lovingly created to provide strength and quality which will last a lifetime.

Added to this, we react quickly and efficiently to our customer's needs, and are able to produce new fittings that perfectly match the style and character of any room or building.

### **Our promise**

We keep most of our products in stock and aim to deliver within 72 hours. So if you're trying to find a match for existing traditional ironwork or perhaps want to fit out a stylish new barn conversion, we're sure to have what you need.

We can supply everything from door and window furniture to coat hooks and shelf brackets, but if you can't find what you are looking for please get in touch as we are also able to create bespoke, one-off pieces to suit your exact needs.

### **Our authenticity**

We use malleable iron, because it is stronger and more durable than imported alternatives. This authenticity, coupled with the high quality of our products has made us recognised leaders in our field.

We're proud to be the only traditional ironmongery manufacturer able to use the Made in Britain logo. Why buy a traditional British product steeped in history from India or China?

### **Our guarantee**

We are proud of our heritage and the quality of our malleable iron products. Crafted to the highest standards using traditional manufacturing processes we are confident that you cannot buy a better quality product.

Care instructions are included with each product and by adopting this simple advice you can help ensure that Kirkpatrick Ironmongery will remain highly decorative and will last a lifetime.

### **Our green creds**

Although we are a traditional company, we're always looking for ways to improve our efficiency and therefore our environmental impact – so we've invested in reducing our energy consumption which has helped us save 250 tonnes of carbon each year since we upgraded our processes.

Our factory emissions are minimal and regularly tested to ensure we comply with the Environmental Protection Act and as a result – our carbon footprint is lower than many of our competitors who use foundries in unregulated countries and whose products have been imported into the UK.



## RANGES



### BLACK IRON

Our Black Iron range is the largest available anywhere in the world. Pieces range from traditional to contemporary in style and are available in Antique or Smooth Black Iron finish, with other finishes available on certain products. *(See page 10)*



### BLACKSMITH FORGE

Our stylish Blacksmith Forge range has been inspired by the iconic Gothic architecture of the late medieval period. It includes both door and window furniture, plus other fittings, and comes in a flat matt black or Argent finish to suit both traditional and contemporary-styled homes. *(See page 94)*



### CAST BRASS

Our Cast Brass range is modelled from select pieces from our Black Iron range, which are made entirely from brass so the manufacturing process used differs from our black iron pieces. The component parts are highly polished before assembly and then have a tough lacquer applied to protect the product. *(See page 104)*



### RAWNSLEY

The Rawnsley range is based on ornate patterns rescued from a foundry on Cannock Chase which closed in the early 1980s. Some of the patterns are also to be found in old Kirkpatrick catalogues. The Rawnsley range is available in Black, Pewter and Argent finishes. *(See page 116)*

## FINISHES



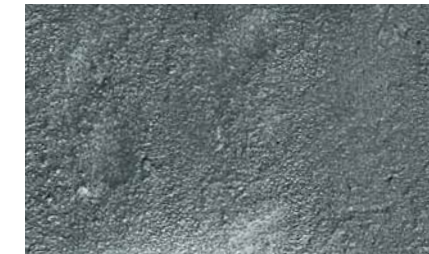
### AB ANTIQUE BLACK

A stippled and slightly glossy black iron finish gives our products a unique texture. This is achieved by using antique style castings and the application of our tough powder coat protection. Products which have moving parts are also subjected to a prior coat of paint for additional protection.



### SB SMOOTH BLACK

A smooth matt textured, black iron finish. Although many products look similar to those with an Antique Black finish these differ because we use a smooth style pattern. The same paint and powder process as Antique Black is generally used.



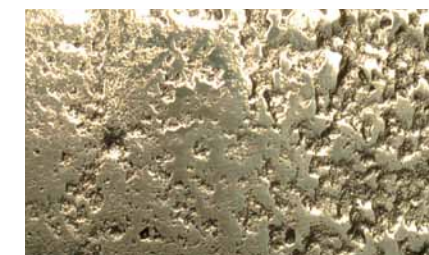
### A ARGENT

Argent has a slight stippled 'naked' silver metal finish which creates subtle highlights in differing lights. It differs from Pewter in that it is a bare metal finish with a coat of clear lacquer applied for protection.



### P PEWTER

Our Pewter finish is achieved by using a different colour final coating to give a long lasting Pewter effect. This finish is available on most products.



### B BRASS

Our original and authentic patterns are used to produce our Cast Brass range, and after casting the components are polished and then assembled by hand, finally finished with a tough lacquer to offer protection against corrosion.



# BLACK IRON RANGE

- 12 Door and gate furniture
- 64 Gate fittings
- 66 Window furniture
- 78 Cabinet and drawer furniture
- 82 Home accessories

*The traditional handcrafted nature of our production process means that all listed sizes are approximate.*



Door hinges 978 and door handle 2451  
in Antique Black



DOOR AND GATE FURNITURE  
LEVER HANDLES



754

AB P  
A



1563

AB P  
A



2434

AB P  
A



2445

AB P  
A



2445/1065

AB P  
A



2440

AB P  
A



2450

AB P  
A B



2433

AB P  
A



2439

AB P  
A B

**754**  
Lock, latch, bathroom, Euro & oval  
228 x 50mm (9" x 2")

**2445**  
Lock, latch, bathroom, Euro & oval  
152 x 38mm (6" x 1 1/2")

**2450**  
Lock, latch, bathroom, Euro & oval  
190 x 57mm (7 1/2" x 2 1/4")

**1563**  
Lock, latch, bathroom, Euro & oval  
247 x 50mm (9 3/4" x 2")

**2445/1065**  
Lever handle with escutcheon cover over  
keyhole. Cover also available on other patterns.

**2433**  
Latch only - 139 x 47mm (5 1/2" x 1 7/8")

**2434**  
Lock or latch - 184 x 57mm (7 1/4" x 2 1/4")  
Short latch - 143 x 57mm (5 5/8" x 2 1/4")

**2440**  
Lock, latch, bathroom, Euro & oval  
152 x 38mm (6" x 1 1/2")

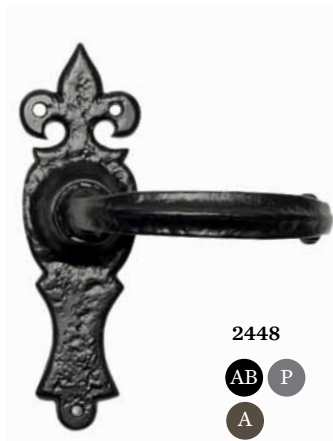
**2439**  
Lock or latch - 152 x 38mm (6" x 1 1/2")  
Short latch - 101 x 38mm (4" x 1 1/2")

See glossary (p127) to identify which handle type you require. All products are spring loaded except where indicated.



Door handle 2445  
and wall lamp 406  
in Antique Black

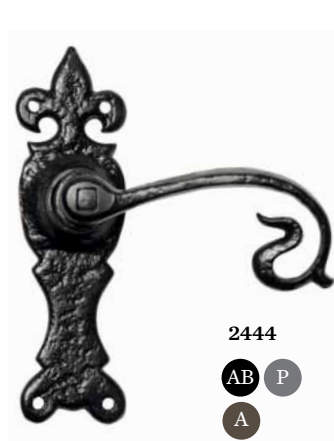
DOOR AND GATE FURNITURE  
LEVER HANDLES



2448  
AB P  
A



2442  
AB P  
A



2444  
AB P  
A



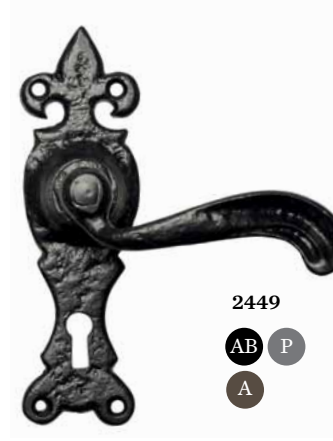
2496  
AB P  
A



2564  
SB P  
A



2491  
AB P  
A



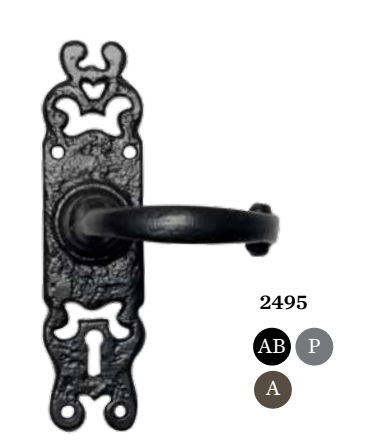
2449  
AB P  
A



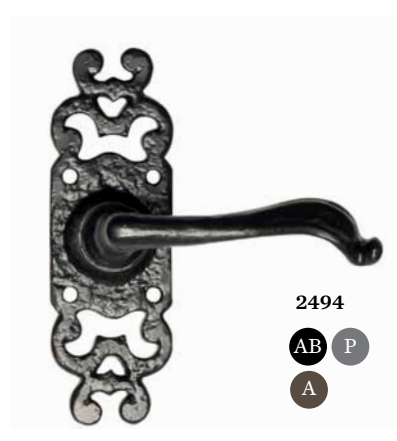
2451  
AB P  
A B



2454  
AB P  
A B



2495  
AB P  
A



2494  
AB P  
A



2563  
SB P  
A B



2520  
AB P  
A



2488  
AB P  
A



2519  
SB P  
A



2568  
SB P  
A



2456  
SB P  
A

**2448**  
Lock, latch & bathroom  
159 x 50mm (6 1/4" x 2")

**2449**  
Lock, latch, bathroom, Euro & oval  
165 x 50mm (6 1/2" x 2")

**2520**  
Latch only - 108 x 50mm (4 1/4" x 2")

**2442**  
Lock, latch & bathroom  
159 x 50mm (6 1/4" x 2")

**2451**  
Lock, latch, bathroom, Euro & oval  
164 x 47mm (6 1/2" x 1 7/8")

**2488**  
Lock, latch, bathroom, Euro & oval  
127 x 50mm (5" x 2")

**2444**  
Lock, latch & bathroom  
165 x 50mm (6 1/2" x 2")

**2454**  
Lock, latch, bathroom, Euro & oval  
164 x 47mm (6 1/2" x 1 7/8")

**2519**  
Lock, latch & bathroom  
127 x 50mm (5" x 2")

**2496**  
Lock, latch, bathroom, Euro & oval  
177 x 38mm (7" x 1 1/2")

**2495**  
Lock, latch & bathroom  
184 x 50mm (6 1/2" x 2")

**2568**  
Lock, latch, bathroom & Euro  
152 x 38mm (6" x 1 1/2")

**2564**  
Lock - 140 x 55mm (5 1/2" x 2 1/2")  
Latch - 114 x 55mm (4 1/2" x 2 1/2")

**2494**  
Lock - 185 x 50mm (7 1/4" x 2")  
Latch - 152 x 50mm (6" x 2")  
Bathroom - 185 x 50mm (7 1/4" x 2")

**2456**  
Lock, latch, bathroom, Euro & oval  
152 x 38mm (6" x 1 1/2")

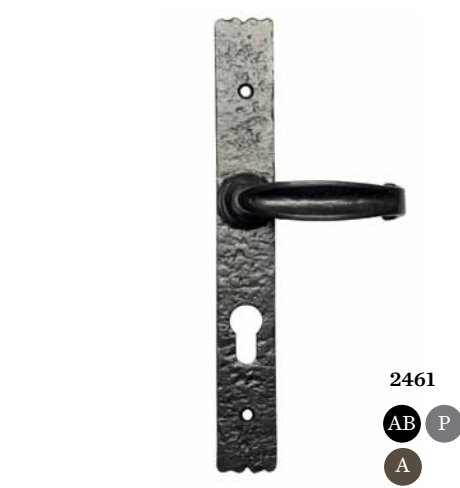
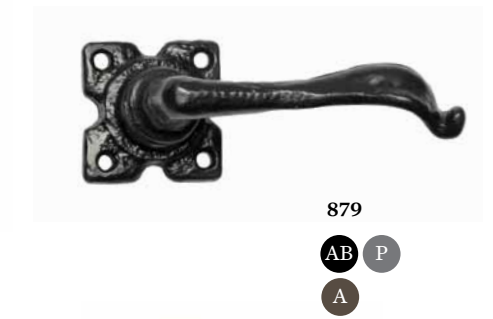
**2491**  
Lock, latch, bathroom, Euro & oval  
197 x 45mm (7 3/4" x 1 3/4")

**2563**  
Lock - 140 x 38mm (5 1/2" x 1 1/2")  
Latch - 114 x 38mm (4 1/2" x 1 1/2")

See glossary (p127) to identify which handle type you require. All products are spring loaded except where indicated.



# DOOR AND GATE FURNITURE LEVER HANDLES



**2432**  
Latch only - 70 x 70mm (2 3/4" x 2 3/4")

**2521**  
Euro & oval - 265 x 44mm (10 1/2" x 1 5/8")  
72mm & 92mm standard centres  
Not spring loaded

**2459**  
Euro & oval - 266 x 38mm (10 1/2" x 1 1/2")  
72mm & 92mm standard centres  
Not spring loaded

**2471**  
Latch only - 50 x 50mm (2" x 2")

**2523**  
Euro & oval - 265 x 44mm (10 1/2" x 1 5/8")  
72mm & 92mm standard centres  
Not spring loaded

**2461**  
Euro & oval - 266 x 38mm (10 1/2" x 1 1/2")  
72mm & 92mm standard centres  
Not spring loaded

**879**  
Latch only - 50 x 50mm (2" x 2")

**2460**  
Euro & oval - 266 x 38mm (10 1/2" x 1 1/2")  
72mm & 92mm standard centres  
Not spring loaded

**2462**  
Euro & oval - 273 x 44mm (10 3/4" x 1 3/4")  
72mm & 92mm standard centres  
Not spring loaded

*For Euro style handles, specials can be made in lock and latch in an un-sprung version. Please enquire for more information.*

*See glossary (p127) to identify which handle type you require.*

Lever door handle 2471 in Antique Black



# DOOR AND GATE FURNITURE

## LEVER HANDLES



**6054**  
 AB P  
 A



**2524**  
 SB P  
 A



**2522**  
 SB P  
 A



**2463**  
 AB P  
 A



**Cylinder 6000**

**6054**  
 Euro only  
 266 x 38mm (10 1/2" x 1 1/2")  
 72mm & 92mm standard centres  
 Not spring loaded

**2463**  
 Lock, latch, bathroom & Euro  
 Euro available when matched to  
 sashlock 7008  
 267 x 38mm (10 1/2" x 1 1/2")  
 Spring loaded

**2524**  
 Euro & oval  
 266 x 38mm (10 1/2" x 1 1/2")  
 72mm & 92mm standard centres  
 Not spring loaded

**Cylinder 6000**  
 Black double cylinder or thumb turn and  
 single cylinder. Keyed alike, keyed to differ  
 or master keyed. Odd sizes available in  
 multiples of 5mm. Please ask for details.

**2522**  
 Euro & oval  
 266 x 38mm (10 1/2" x 1 1/2")  
 72mm & 92mm standard centres  
 Not spring loaded

*For Euro style handles, specials can be made in lock  
 and latch in an un-sprung version. Please enquire for  
 more information.*

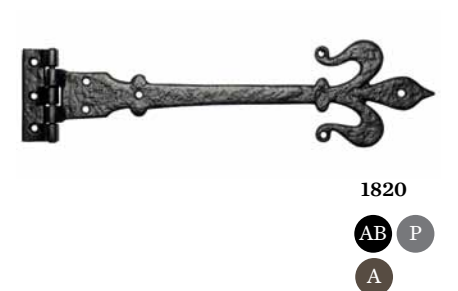
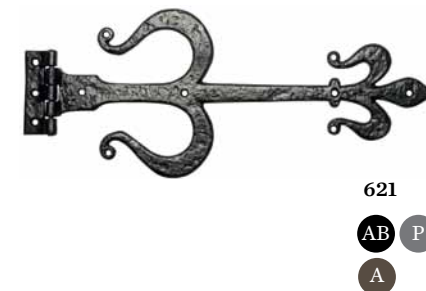
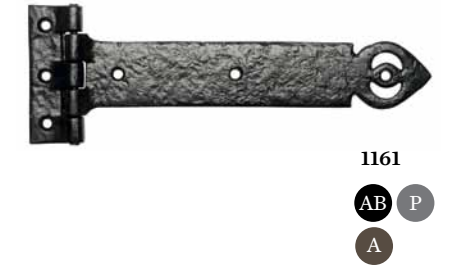




Door hinge front 814F in Antique Black  
and door hinge 814 in Argent



## DOOR AND GATE FURNITURE HINGES



**799**  
228 x 101mm (9" x 4")  
304 x 140mm (12" x 5 1/2")  
400 x 146mm (15 3/4" x 5 3/4")  
457 x 152mm (18" x 6")  
533 x 152mm (21" x 6")  
609 x 160mm (24" x 6 1/4")

**3679**  
228 x 108mm (9" x 4 1/4")  
266 x 108mm (10 1/2" x 4 1/4")  
304 x 108mm (12" x 4 1/4")  
381 x 108mm (15" x 4 1/4")  
457 x 108mm (18" x 4 1/4")

**622**  
419 x 171mm (16 1/2" x 6 3/4")

**810**  
304 x 133mm (12" x 5 1/4")  
406 x 133mm (16" x 5 1/4")  
482 x 133mm (19" x 5 1/4")  
660 x 133mm (26" x 5 1/4")

**814**  
152 x 63mm (6" x 2 1/2")  
263 x 101mm (10 1/2" x 4")  
313 x 101mm (12" x 4")  
388 x 101mm (15" x 4")  
456 x 101mm (18" x 4")  
513 x 101mm (21" x 4")

**621**  
508 x 209mm (20" x 8 1/4")

**1161**  
304 x 101mm (12" x 4")  
381 x 101mm (15" x 4")  
457 x 101mm (18" x 4")

**1814**  
Lift off hinge  
Strap - 283mm (11")  
Plate - 88 x 28mm (3 1/2" x 1")

**1820**  
406 x 108mm (16" x 4 1/4")  
457 x 120mm (18" x 4 3/4")  
508 x 120mm (20" x 4 3/4")



# DOOR AND GATE FURNITURE HINGES



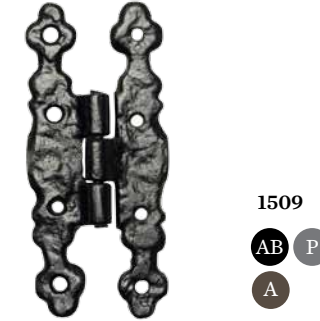
**1159**  
AB P  
A



**809**  
AB P  
A



**645**  
AB P  
A



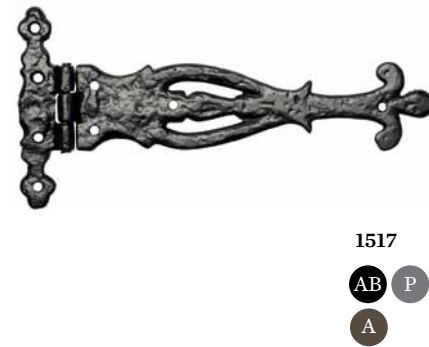
**1509**  
AB P  
A



**1120**  
AB P  
A



**1507**  
AB P  
A



**1517**  
AB P  
A



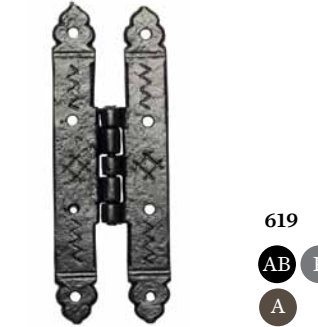
**1513**  
AB P  
A



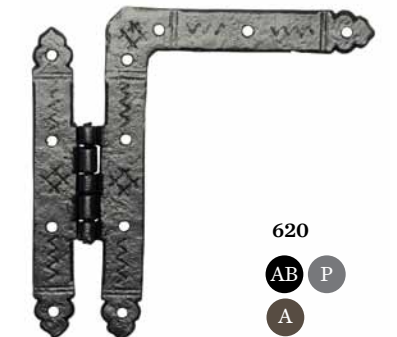
**816**  
AB P  
A



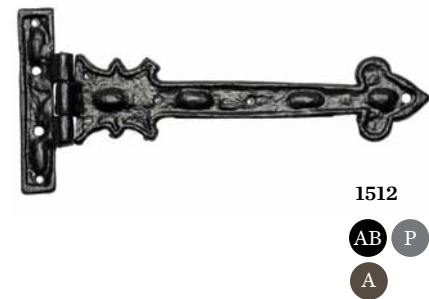
**829**  
AB P  
A



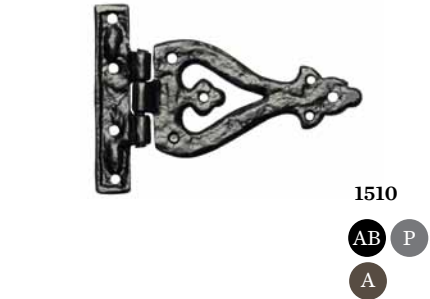
**619**  
AB P  
A



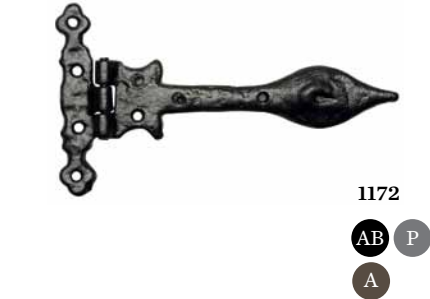
**620**  
AB P  
A



**1512**  
AB P  
A



**1510**  
AB P  
A



**1172**  
AB P  
A



**1558**  
AB P  
A



**1508**  
AB P  
A



**5141/5148**  
SB P  
A

**1159**  
304 x 114mm (12" x 4 1/2")  
**1517**  
228 x 114mm (9" x 4 1/2")  
**1512**  
207 x 95mm (8" x 3 3/4")

**809**  
660 x 133mm (26" x 5 1/4")  
**1513**  
194 x 80mm (7 1/2" x 3 1/4")  
**1510**  
133 x 94mm (5 1/4" x 3 3/4")

**645**  
457 x 101mm (18" x 4")  
609 x 101mm (24" x 4")  
**816**  
203 x 95mm (8" x 4")  
**1172**  
156 x 88mm (6" x 3 1/2")  
232 x 114mm (9" x 4 1/2")  
304 x 114mm (12" x 4 1/2")

**1509**  
Suitable for cabinet doors  
111 x 51mm (4 1/2" x 2")  
**829**  
Suitable for cabinet doors  
90 x 69mm (3 1/2" x 2 5/8")  
**1558**  
Suitable for cabinet doors  
101 x 35mm (4" x 1 3/8")

**1120**  
Suitable for cabinet doors  
89 x 41mm (3 1/2" x 1 5/8")  
**619**  
171 x 63mm (6 3/4" x 2 1/2")  
**1508**  
Suitable for cabinet doors  
95 x 45mm (3 1/4" x 1 3/4")

**1507**  
Suitable for cabinet doors  
80 x 42mm (3 1/4" x 1 5/8")  
**620**  
177 x 63mm (7" x 2 1/2")  
**5141/5148**  
(5141) Steel butt hinge – 102mm (4")  
(5148) Steel butt hinge – 76mm (3")



# DOOR AND GATE FURNITURE HINGES



925  
AB P  
A



926  
AB P  
A B



927  
AB P  
A



1511  
AB P  
A

**925**  
Suitable for cabinet doors  
51 x 38mm (2 1/8" x 1 3/4")  
70 x 50mm (2 3/4" x 2")

**1511**  
139 x 114mm (5 1/2" x 4 1/2")

**926**  
Suitable for cabinet doors  
83 x 45mm (3 1/4" x 1 3/4")

**927**  
Suitable for cabinet doors  
130 x 73mm (5" x 2 7/8")

# DOOR AND GATE FURNITURE HINGE FRONTS



798  
AB P  
A B



797  
AB P  
A



977  
AB P  
A



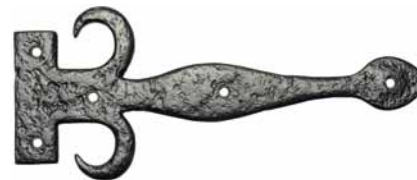
821  
AB P  
A



817  
AB P  
A



820  
AB P  
A



819  
AB P  
A



978  
AB P  
A



641  
AB P  
A



814F  
AB P  
A

**798**  
304 x 139mm (12" x 5 1/2")  
392 x 145mm (15 1/2" x 5 3/4")  
457 x 152mm (18" x 6")  
533 x 152mm (21" x 6")

**821**  
203 x 73mm (8" x 1 7/8")  
304 x 89mm (12" x 3 1/2")  
457 x 139mm (18" x 5 1/2")

**819**  
304 x 129mm (12" x 5 3/4")  
381 x 146mm (15" x 5 3/4")  
457 x 146mm (18" x 5 3/4")  
533 x 146mm (21" x 5 3/4")

**797**  
381 x 82mm (15" x 3 1/4")  
457 x 89mm (18" x 3 1/2")

**817**  
304 x 114mm (12" x 4 1/2")  
406 x 159mm (16" x 6 1/4")  
508 x 216mm (20" x 8 1/2")

**978**  
101 x 89mm (4" x 3 1/2")

**977**  
247 x 54mm (9 3/4" x 2 1/8")

**820**  
152 x 41mm (6" x 1 5/8")  
304 x 63mm (12" x 2 1/2")  
406 x 120mm (16" x 4 3/4")  
457 x 120mm (18" x 4 3/4")

**641**  
345 x 90mm (13 3/4" x 3 1/2")

**814F**  
304mm (12"), 381mm (15")  
457mm (18"), 533mm (21")



# DOOR AND GATE FURNITURE

## THUMB LATCHES



3624

AB P  
A



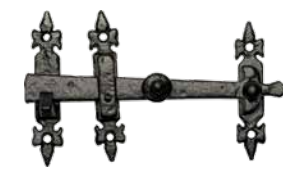
671

AB P  
A



1145

AB P  
A



3618

AB P  
A



688

AB P  
A



3619

AB P  
A B



1147

AB P  
A



1124

AB P  
A



3630

AB P  
A



**3624**  
Handle - 203mm (8")  
Latch - 216mm (8 1/2")  
Handle - 235mm (9 1/4")  
Latch - 216mm (8 1/2")  
Available in left and right hand versions  
(Left hand shown)

**3618**  
Handle - 228 x 63mm (9" x 2 1/2")  
Latch - 197mm (7 3/4")

**1147**  
Handle - 197mm (7 3/4")  
Latch - 152mm (6")

**671**  
Handle - 254 x 63mm (10" x 2 1/2")  
Latch - 228mm (9")

**688**  
Handle - 254 x 50mm (10" x 2")  
Latch - 177mm (7")

**1124**  
Side fixing catch  
Handle - 190 x 50mm (7 1/2" x 2")  
Latch - 101mm (4")

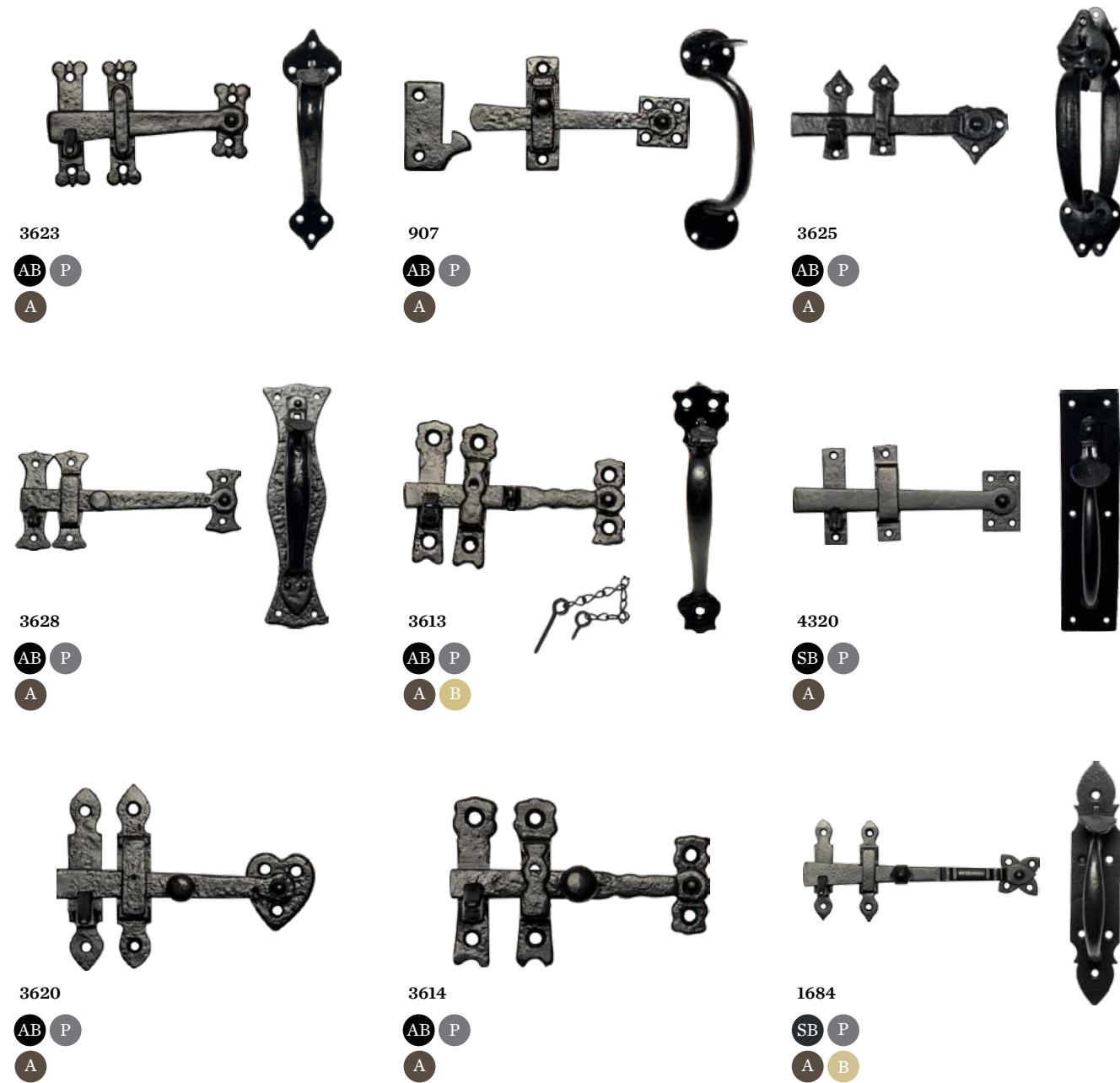
**1145**  
Handle - 177 x 38mm (7" x 1 1/2")  
Latch - 216mm (8 1/2")

**3619**  
Handle - 203 x 63mm (8" x 2 1/2")  
Latch - 127mm (5")

**3630**  
Handle - 190 x 63mm (7 1/2" x 2 1/2")  
Latch - 152mm (6")



DOOR AND GATE FURNITURE  
THUMB LATCHES



3623  
AB P  
A

907  
AB P  
A

3625  
AB P  
A

3628  
AB P  
A

3613  
AB P  
A B

4320  
SB P  
A

3620  
AB P  
A

3614  
AB P  
A

1684  
SB P  
A B



Reverse of latch set 3619 in Argent



3622  
SB P  
A

1681  
SB P  
A

4305  
SB P  
A

**3623**  
Handle - 203mm (8")  
Latch - 152mm (6")

**3628**  
Handle - 260 x 73mm (10 1/4" x 2 7/8")  
Latch - 247mm (9 3/4")

**3620**  
Cupboard latch - 127mm (5")

**907**  
Cranked handle - 190mm (7 1/2")  
Latch - 139mm (5 1/2")  
Available in left and right hand versions

**3613**  
Handle - 152mm (6")  
Latch - 114mm (4 1/2")

**3614**  
Cupboard latch - 114mm (4.5")

**3625**  
Bow handles each side of door  
Handle - 241mm (9 1/2")  
Latch - 203mm (8")

**4320**  
Plate - 247 x 59mm (9 3/4" x 2 1/4")  
Latch - 228mm (9")  
Inside of handle - 108mm (4 1/4")

**1684**  
Plate - 216 x 44mm (8 1/2" x 1 3/4")  
Latch - 241mm (9 1/2")  
Inside of handle - 89mm (3 1/2")

**3622**  
Plate - 191 x 35mm (7 1/2" x 1 3/8")  
Latch - 203mm (8")  
Inside of handle - 89mm (3 1/2")

**1681**  
Cranked or straight. Cranked has locking wedge. Available in left and right hand versions. Handle - 191mm (7 1/2")  
Latch - 127mm (5")

**4305**  
Plate - 197 x 46mm (7 3/4" x 1 3/4")  
Inside of handle - 89mm (3 1/2")

See glossary (p127) to understand the difference between straight and cranked.



DOOR AND GATE FURNITURE  
GATE LATCHES



717  
AB P  
A



632  
AB P  
A



911  
AB P  
A



1249  
AB P  
A



3979  
SB P  
A



1146  
AB P  
A



679  
AB P  
A



491  
SB P  
A



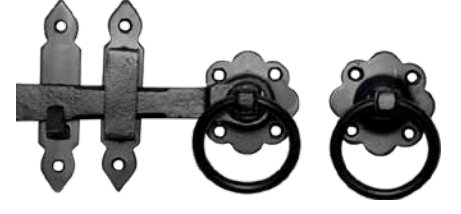
3431  
SB P  
A



1246  
AB P  
A



4438  
SB P  
A



3258  
SB P  
A



3981  
SB P  
A



1248  
AB P  
A



1251  
AB P  
A



869  
AB P  
A



866  
AB P  
A



4088  
SB P  
A



867  
AB P  
A

**717**  
Plate - 127 x 76mm (5" x 3")  
Handle diameter - 89mm (3 1/2")  
**679**  
Handle - 76mm (3")  
Rose - 63mm (2 1/2")  
**3981**  
Ring - 76mm (3")  
Plate - 76mm (3")

**632**  
Handle - 101mm (4")  
Rose diameter - 101mm (4")  
**491**  
Plate - 108mm (4 1/4")  
Ring - 76mm (3")  
**1248**  
Latch - 203mm (8") or 254mm (10")

**911**  
Handle - 76mm (3")  
Rose - 50mm (2")  
**3431**  
Ring - 76mm (3")  
Plate - 76mm (3")  
**1251**  
Latch - 127mm (5") or 177mm (7")

**1249**  
Latch - 152mm (6")\*, 177mm (7")\*,  
203mm (8"), 254mm (10")  
\*Supplied with 1146 catch & staple  
**1246**  
Latch - 152mm (6") or 197mm (7 3/4")  
**869**  
Latch - 203mm (8")

**3979**  
Latch - 127mm (5"), 152mm (6"), 177mm (7")  
**4438**  
Latch - 152mm (6")  
**866**  
Latch - 177mm (7") or 203mm (8")  
**4088**  
Latch - 152mm (6")

**1146**  
Latch - 127mm (5")  
**3258**  
Latch - 127mm (5"), 152mm (6"), 177mm (7")  
**867**  
Latch - 152mm (6")



Lever door handle 2449 and letter plate 1073 in Antique Black. Beetle shoe remover 5005 in Smooth Black

## DOOR AND GATE FURNITURE LETTER PLATES



1073



1324



1911



1085



962



1083



	Outside	Opening	Fixing bolt centres
<b>1073</b>	304 x 82mm (12" x 3")	144 x 38mm (6" x 1 1/2")	222mm (8 1/2")
	362 x 88mm (14 1/4" x 3 1/2")	203 x 44mm (8" x 1 3/4")	277mm (10 3/4")
	419 x 76mm (16 1/2" x 3")	260 x 33mm (10 1/4" x 1 5/16")	345mm (13 1/2")
<b>1324</b>	228 x 76mm (9" x 3")	155 x 41mm (6 1/8" x 1 5/8")	191mm (7 1/2")
	267 x 101mm (10 1/2" x 4")	203 x 45mm (8" x 1 3/4")	235mm (9 1/4")
<b>1911</b>	267 x 114mm (10 1/2" x 4 1/2")	203 x 41mm (8" x 1 5/8")	235mm (9 1/4")

	Outside	Opening	Fixing bolt centres
<b>1085</b>	304 x 101mm (12" x 4")	139 x 38mm (5 1/2" x 1 1/2")	222mm (8 3/4")
	362 x 104mm (14 1/4" x 4 1/8")	203 x 44mm (8" x 1 3/4")	279mm (11")
<b>962</b>	228 x 101mm (9" x 4")	163 x 41mm (6 3/4" x 1 5/8")	203mm (8")
<b>1083</b>	266 x 76mm (8" x 3")	139 x 35mm (5 1/2" x 1 1/3")	171mm (6 3/4")
	266 x 108mm (10 1/2" x 4 1/4")	203 x 44mm (8" x 1 3/4")	241mm (9 1/4")
	340 x 102mm (13 3/4" x 4")	238 x 50mm (9 3/4" x 1 8/8")	296mm (11 1/2")
	352 x 127mm (13 3/4" x 5")	275 x 62mm (11 x 2 1/2")	313mm (12 1/2")



# DOOR AND GATE FURNITURE LETTER PLATES



1963

AB P  
A



967

AB P  
A



1233

AB P  
A



1100/1102/1103

AB P  
A B

	Outside	Opening	Fixing bolt centres
<b>1963</b>	295 x 108mm (11 5/8" x 4 1/4")	203 x 44mm (8" x 1 3/4")	254mm (10")
<b>1100</b>	Internal flap - 241 x 71mm (9 1/2" x 3")		
<b>1102</b>	Internal flap - 292 x 76mm (11 1/2" x 3")		
<b>1103</b>	Internal flap - 355 x 101mm (14" x 4")		

	Outside	Opening
<b>967</b>	317 x 76mm (13" x 3")	139 x 38mm (5 1/2" x 1 1/2")
<b>1233</b>	Outside 311 x 57mm (12 1/4" x 2 1/4")	Opening 133 x 28mm (5 1/4" x 1 1/8")

# DOOR AND GATE FURNITURE BOLTS AND LOCKS



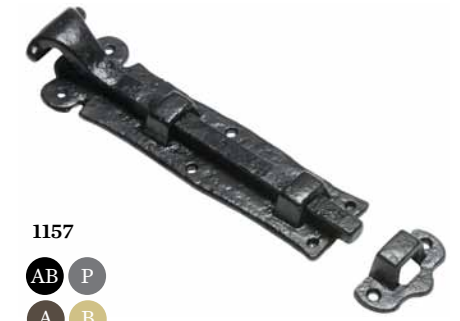
1155

AB P  
A B



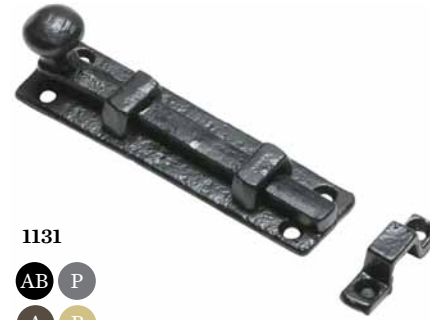
1156

AB P  
A



1157

AB P  
A B



1131

AB P  
A B



903

AB P  
A



1196

AB P  
A



902

AB P  
A



830

AB P  
A



1149

AB P  
A

<b>1155</b>	Straight or cranked Plate - 152 x 45mm (6" x 1 3/4") or 203 x 54mm (8" x 2 1/8")
	Straight only Plate - 254 x 54mm (10" x 2 1/8") or 304 x 54mm (12" x 2 1/8")
<b>1131</b>	Straight or cranked Plate - 101 x 25mm (4" x 1")
<b>902</b>	Straight only Plate - 127 x 50mm (5" x 2") Bolt - 152mm (6")

<b>1156</b>	Straight or cranked Plate - 152 x 45mm (6" x 1 3/4") or 203 x 45mm (8" x 1 3/4")
<b>903</b>	Straight only Plate - 152 x 63mm (6" x 2 1/2") Bolt - 152mm (6") Plate - 222 x 89mm (8 3/4" x 3 1/2") Bolt - 228mm (9")
<b>830</b>	Straight or cranked Bolt - 101mm (4") or 152mm (6") Plate - 27 x 95mm (1 1/16" x 3 3/4") or 27 x 150mm (1 1/16" x 6")

<b>1157</b>	Straight or cranked Plate - 114 x 38mm (4 1/2" x 1 1/2") Bolt - 127mm (5") Plate - 190 x 57mm (7 1/2" x 2 1/4") Bolt - 203mm (8")
	Straight only Plate - 241 x 57mm (9 1/2" x 2 1/4") Bolt - 254mm (10") Plate - 292 x 57mm (11 1/2" x 2 1/4") Bolt - 304mm (12")
<b>1196</b>	63 x 35mm (2 1/2" x 1 3/8")
<b>1149</b>	Plate - 304 x 50mm (12" x 2") Bolt - 555mm (22")

See glossary (p127) to understand the difference between straight and cranked.



# DOOR AND GATE FURNITURE

## BOLTS AND LOCKS



**812**  
AB P  
A

**1257**  
AB P  
A

**1154**  
AB P  
A

**1546**  
AB P  
A

**1547**  
AB P  
A

**4090**  
SB P  
A

**5170**  
SB P  
A

**4321**  
SB P  
A

**796**  
SB P  
A

**812**  
Straight or cranked  
Plate - 193 x 50mm (7 5/8" x 2")  
Bolt - 203mm (8")

Straight only  
Plate - 228 x 54mm (9" x 2 1/8")  
Bolt - 254mm (10")  
Plate - 279 x 57mm (11" x 2 1/4")  
Bolt - 304mm (12")

**1546**  
Straight only  
Plate - 101mm (4")

**5170**  
Straight only  
Bolt - 152 x 45mm (6" x 1 3/4")

**1257**  
Straight only  
Plate - 190 x 57mm (7 1/2" x 2 1/4")  
Bolt - 203mm (8")

**1547**  
Cranked only  
Plate - 101mm (4")

**4321**  
Straight or cranked  
152 x 45mm (6" x 1 3/4")

**1154**  
Straight only  
Plate 101 x 38mm (4" x 1 1/2")  
or 152 x 38mm (6" x 1 1/2")

**4090**  
Straight only. Plate width for all - 50mm (2")  
305 x 16mm (12" x 5/8"), 381 x 16mm  
(15" x 5/8"), 457 x 16mm (18" x 5/8"),  
533 x 16mm (21" x 5/8"), 610 x 16mm  
(24" x 5/8"), 762 x 19mm (30" x 3/4"),  
915 x 19mm (36" x 3/4"), 1,220 x 19mm  
(48" x 3/4")

**796**  
Straight only  
Plate width for all - 57mm (2 1/4")  
203mm (8"), 254mm (10"), 305mm (12")  
381mm (15"), 457mm (18"), 533mm (21")  
610mm (24"), 686mm (27"), 762mm (30")  
915mm (36")

See glossary (p127) to understand the difference between straight and cranked.



Bolt 1155 in Antique Black



# DOOR AND GATE FURNITURE

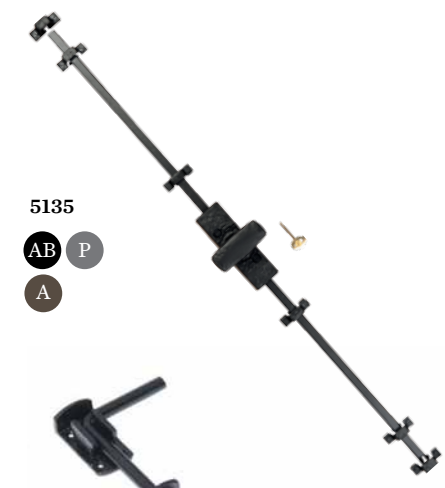
## BOLTS AND LOCKS



**1158**  
AB P  
A



**2967**  
AB P  
A



**5135**  
AB P  
A



**2968**  
AB P  
A



**1150**  
AB P  
A B



**4091**  
SB P  
A



**5520**  
AB P  
A



**1204**  
AB P  
A



**5147**  
SB P

**1158**  
Flush bolt - 152 x 25mm (6" x 1")  
or 203 x 25mm (8" x 1")

**2968**  
152mm (6")

**5520**  
Rim lock - 152 x 102mm (6" x 4")

**2967**  
123 x 76mm (4 3/4" x 3")

**1150**  
Privacy bolt with vacant/engaged sign  
Latch - 64 x 25mm (2 1/2" x 1")  
Catch - 64 x 20mm (2 1/2" x 3/4")  
Disc - 70 x 70mm (2 3/4" x 2 3/4")

**1204**  
Lock, latch or deadlock. Supplied with 1550 knob, oval escutcheon and Wilkes spindle.  
Lock body - 125 x 103 x 19mm (4 3/4" x 4" x 3/4")

**5135**  
Espagnolette bolt - 2.4m (8ft)  
Also available in 3.05m (10ft) on request  
Secures the door both top and bottom.

**4091**  
Drop bolt - 457 x 101mm (18" x 4")  
Diameter of handle 15mm (5/8")  
Guides 86 x 45mm (3 3/8" x 1 3/4")  
& 66 x 45mm (2 1/2" x 1 3/4")

**5147**  
Door rack bolt

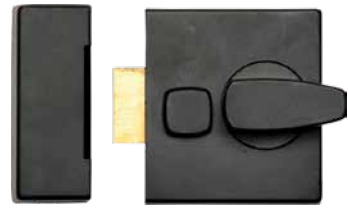


# DOOR AND GATE FURNITURE

## BOLTS AND LOCKS



5144  
SB



5143  
SB



5142  
SB



5132  
AB P  
A



5133  
AB P  
A



5140  
SB P



7006/7007  
SB P



**5144**  
Standard night latch – 60mm (2 3/8")

**5132**  
Star spindle knob (Chubb) – 33mm (1 3/10")

**7006/7007**  
(7006) Tubular latch – 64mm (2 1/2")  
(7007) Tubular latch – 76mm (3")

**5143**  
Narrow night latch – 40mm (1 1/2")

**5133**  
Bathroom turn and release – 33mm (1 3/10")  
Suitable dead bolt available (5140)

**5142**  
Rim cylinder and keys – 33mm (1 1/4")

**5140**  
Deadlock  
**7005**  
Deadlock rebate kit



7000/7001  
SB P



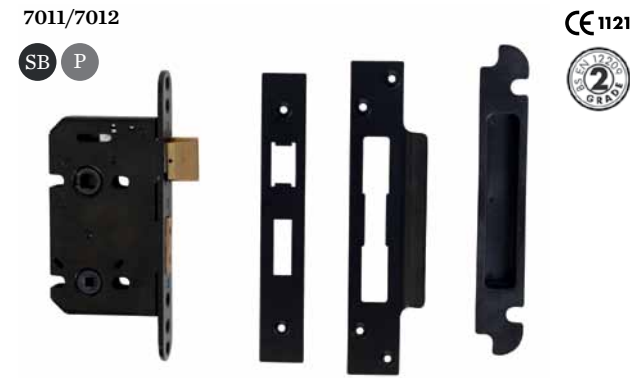
7002/7003  
SB P



7004  
SB P



7008/7009  
SB P



7011/7012  
SB P



7013/7014  
SB P



**7000/7001**  
(7000) Deadlock with escutcheons – 64mm (2 1/2")  
(7001) Deadlock with escutcheons – 76mm (3")

**7004**  
Sash rebate kit

**7011/7012**  
(7011) Bathroom lock – 64mm (2 1/2")  
(7012) Bathroom lock – 76mm (3")

**7002/7003**  
(7002) Sashlock – 64mm (2 1/2")  
(7003) Sashlock – 76mm (3")

**7008/7009**  
(7008) Euro sashlock – 64mm (2 1/2")  
(7009) Euro sashlock – 76mm (3")

**7013/7014**  
(7013) Euro deadlock – 64mm (2 1/2")  
(7014) Euro deadlock – 76mm (3")



# DOOR AND GATE FURNITURE

## PULL HANDLES



**2157**  
 AB P  
 A



**2155**  
 AB P  
 A



**2173**  
 AB P  
 A



**2167**  
 AB P  
 A



**2164**  
 AB P  
 A



**807**  
 AB P  
 A



**2172**  
 AB P  
 A



**3603**  
 AB P  
 A B

**2157**  
 304 x 63mm (12" x 2 1/2")  
 Inside grip - 152mm (6")

**2164**  
 Straight handle  
 381 x 50mm (15" x 2")

**2155**  
 343 x 73mm (13 1/2" x 2 7/8")  
 Inside grip - 152mm (6")

**807**  
 152 x 44mm (6" x 1 3/4")  
 266 x 57mm (10 1/2" x 2 1/4")  
 (Right hand shown)

**2173**  
 444 x 76mm (17 1/2" x 3")  
 Inside grip - 190mm (7 1/2")

**2172**  
 266 x 44mm (10 1/2" x 1 3/4")

**2167**  
 386 x 50mm (15 1/4" x 2")

**3603**  
 191 x 64mm (7 1/2" x 2 1/2")



DOOR AND GATE FURNITURE  
PULL HANDLES



564  
AB P  
A B



937  
AB P  
A



1579  
AB P  
A



1125  
AB P  
A



1578  
AB P  
A



3652  
AB P  
A



3651  
SB P  
A



2788  
SB P  
A



2105  
SB P  
A



1883  
SB P  
A



4013  
SB P  
A

**564**  
101mm (4"), 127mm (5"),  
152mm (6"), 177mm (7"),  
228mm (9")  
**1578**  
215 x 63mm (8 1/2" x 2 1/2")

**937**  
127mm (5")  
**3652**  
254mm (10")

**1579**  
152mm (6")  
**3651**  
203mm (8") or 254mm (10")

**1125**  
146mm (5 3/4")  
**2788**  
Inside grip - 76mm (3")  
or 101mm (4")

**2105**  
Inside grip - 114mm (4")

**1883**  
Inside grip - 76mm (3"),  
89mm (3 1/2"), 101mm (4"),  
127mm (5"), 152mm (6")

**4013**  
152mm (6"), 190mm (7 1/2"),  
254mm (10")



Pull handles 564  
in Antique Black





Door knob 3056, shelf 5131,  
drawer pulls 3960 and cupboard  
knobs 1135 all in Antique Black

## DOOR AND GATE FURNITURE DOOR KNOBS



**808**  
AB P  
A



**1069**  
AB P  
A



**1089**  
AB P  
A



**1205**  
AB P  
A B



**1206**  
AB P  
A



**1207**  
AB P  
A



**1550**  
AB P  
A B



**1551**  
AB P  
A B



**3067**  
AB P  
A

**808**  
Mortice or rim  
Knob - 50mm (2")  
Plate - 63mm (2 1/2")

**1205**  
Mortice or rim  
Knob - 50mm (2")  
Plate - 85mm (3 3/8")

**1550**  
Mortice or rim  
Knob - 63 x 39mm (2 1/2" x 1 1/2")  
Plate - 57mm (2 1/4")

**1069**  
Mortice or rim  
Knob - 44mm (1 3/4")  
Plate - 67 x 50mm (2 5/8" x 2")

**1206**  
Mortice or rim  
Knob - 50mm (2")  
Plate - 60mm (2 3/8")

**1551**  
Mortice or rim  
Knob - 63 x 38mm (2 1/2" x 1 1/2")  
Plate - 67 x 50mm (2 5/8" x 2")

**1089**  
Mortice or rim  
Knob - 60 x 38mm (2 3/8" x 1 1/2")  
Plate - 67 x 50mm (2 5/8" x 2")

**1207**  
Mortice or rim  
Knob - 50mm (2")  
Plate - 85mm (3 3/8")

**3067**  
Mortice or rim  
Knob - 44mm (1 3/4")  
Plate - 60mm (2 1/4")

*See glossary (p127) to understand the  
difference between mortice and rim.*



DOOR AND GATE FURNITURE  
DOOR KNOBS



3056  
AB P  
A B



3064  
AB P  
A B



1203  
AB P  
A



1554  
AB P  
A



C387  
SB P  
A



3072  
AB P  
A



3066  
AB P  
A



3372  
SB P  
A



1553  
AB P  
A



3075  
SB P  
A



3370  
SB P  
A



4085  
SB P  
A



4064  
SB P  
A

**3056**  
Mortice or rim  
Knob - 57mm (2 1/4")  
Plate - 63mm (2 1/2")  
Knob - 70mm (2 3/4")  
Plate - 76mm (3")

**3072**  
Centre door knob  
Knob - 82mm (3 1/4")  
Plate - 171 x 120mm (6 3/4" x 4 3/4")

**3370**  
Centre door knob  
Knob - 73mm (2 7/8")  
Plate - 76mm (3")

**3064**  
Centre door knob  
Knob - 70mm (2 3/4")  
Plate - 76mm (3")

**3066**  
Centre door knob  
Knob - 82mm (3 1/4")  
Plate diameter - 101mm (4")

**4085**  
Mortice or rim  
Knob - 41mm (1 5/8")  
Plate - 64mm (2 1/2")

**1203**  
Mortice or rim  
Knob - 50mm (2")  
Plate - 67 x 50mm (2 5/8" x 2")

**3372**  
Centre door knob  
Knob - 65mm (2 1/2")  
Plate - 71mm (2 3/4")

**4064**  
Mortice or rim  
Knob - 64 x 38mm (2 1/2" x 1 1/2")  
Round plate - 64mm (2 1/2")

**1554**  
Mortice or rim (Mortice shown)  
Knob - 44mm (1 3/4")  
Plate - 66 x 50mm (2 5/8" x 2")

**1553**  
Mortice or rim (Mortice shown)  
Knob - 60 x 38mm (2 3/8" x 1 1/2")  
Plate - 66 x 50mm (2 5/8" x 2")

**C387**  
Mortice or rim (Mortice shown)  
Ball - 44mm (1 3/4")  
Plate - 51mm (2")

**3075**  
Mortice or rim (Rim shown)  
Square design with smooth finish  
Knob - 64 x 38mm (2 1/2" x 1 1/2")  
Plate - 64 x 64mm (2 1/2" x 2 1/2")  
Escutcheon - 38mm (1 1/2")

See glossary (p127) to understand the difference between mortice and rim.



DOOR AND GATE FURNITURE  
DOOR KNOCKERS



**578**  
197 x 114mm (7 3/4" x 4 1/2")

**1239**  
Hand - 165 x 70mm (6 1/2" x 2 3/4")

**586**  
140 x 101mm (5 1/2" x 4")

**896**  
Lion head - 123 x 76mm (4 3/4" x 3")  
Ring - 101mm (4")

**574**  
Fox - 127 x 127mm (5" x 5")

**782**  
Ring - 101mm (4")  
Plate - 50mm (2")

**4896**  
Lion head - 114 x 95mm (4 1/2" x 3 3/4")  
Ring - 101mm (4")

**1117**  
Plate - 101 x 50mm (4" x 2")

**846**  
Ring - 127mm (5")  
Plate - 69mm (2 3/4")





DOOR AND GATE FURNITURE  
DOOR KNOCKERS



1197  
AB P  
A



571  
AB P  
A



944  
AB P  
A



832  
AB P  
A



1005  
SB P  
A



2618  
AB P  
A



2621  
AB P  
A B



2623  
AB P  
A



2629  
AB P  
A



2630  
AB P  
A

**1197**  
Plate - 228 x 120mm (9" x 4 3/4")  
**1005**  
203 x 70mm (8" x 2 3/4")  
**2623**  
Owl bedroom door knocker  
101 x 38mm (4" x 1 1/2")

**571**  
German 16th century 'Dolphin' pattern  
203 x 50mm (8" x 2")  
**944**  
Plate - 190 x 83mm (7 1/2" x 3 1/4")  
**2618**  
Laughing cat bedroom door knocker  
108 x 31mm (4 1/4" x 1 1/4")  
**2629**  
Bedroom door knocker  
127 x 50mm (5" x 2")

**832**  
242 x 57mm (9 1/2" x 2 1/4")  
**2621**  
Bat bedroom door knocker  
76 x 89mm (3" x 3 1/2")  
**2630**  
Lion bedroom door knocker  
133 x 79mm (5 1/4" x 3 1/8")







## DOOR AND GATE FURNITURE DOOR ACCESSORIES

1053

AB P  
A



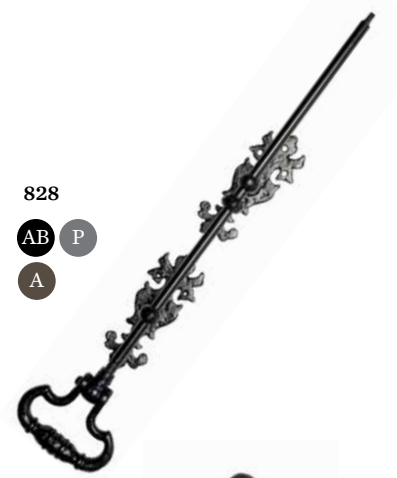
1253

AB P  
A



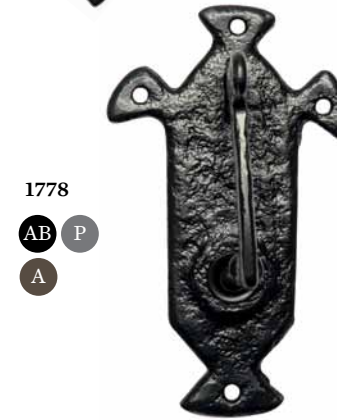
828

AB P  
A



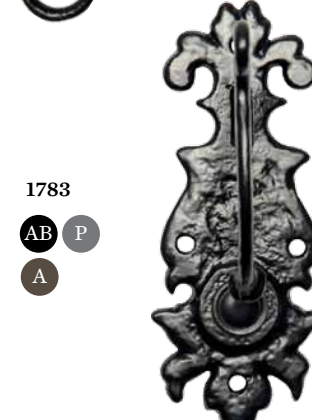
1778

AB P  
A



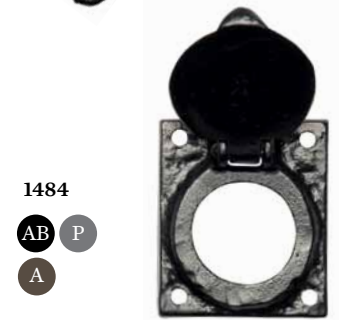
1783

AB P  
A



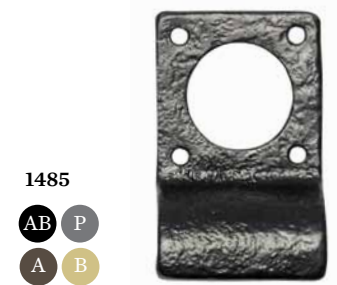
1484

AB P  
A



1485

AB P  
A B



1486

AB P  
A B



1487

AB P  
A



**1053**

Bell pull – 521mm (20 1/2")  
Suitable for use with bell crank

**1778**

Bell crank – 152 x 89mm (6" x 3 1/2")  
Available fitted for use with electric bell  
or not fitted for traditional bell

**1485**

Cylinder latch pull  
85 x 50mm (3 1/2" x 2")

**1253**

Bell pull – 508mm (20")  
Suitable for use with bell crank

**1783**

Bell crank – 139 x 50mm (5 1/2" x 2")  
Available fitted for use with electric bell  
or not fitted for traditional bell

**1486**

Cylinder latch cover/pull  
127 x 58mm (5" x 2 1/2")

**828**

Bell pull – 521mm (20 1/2")  
Suitable for use with bell crank

**1484**

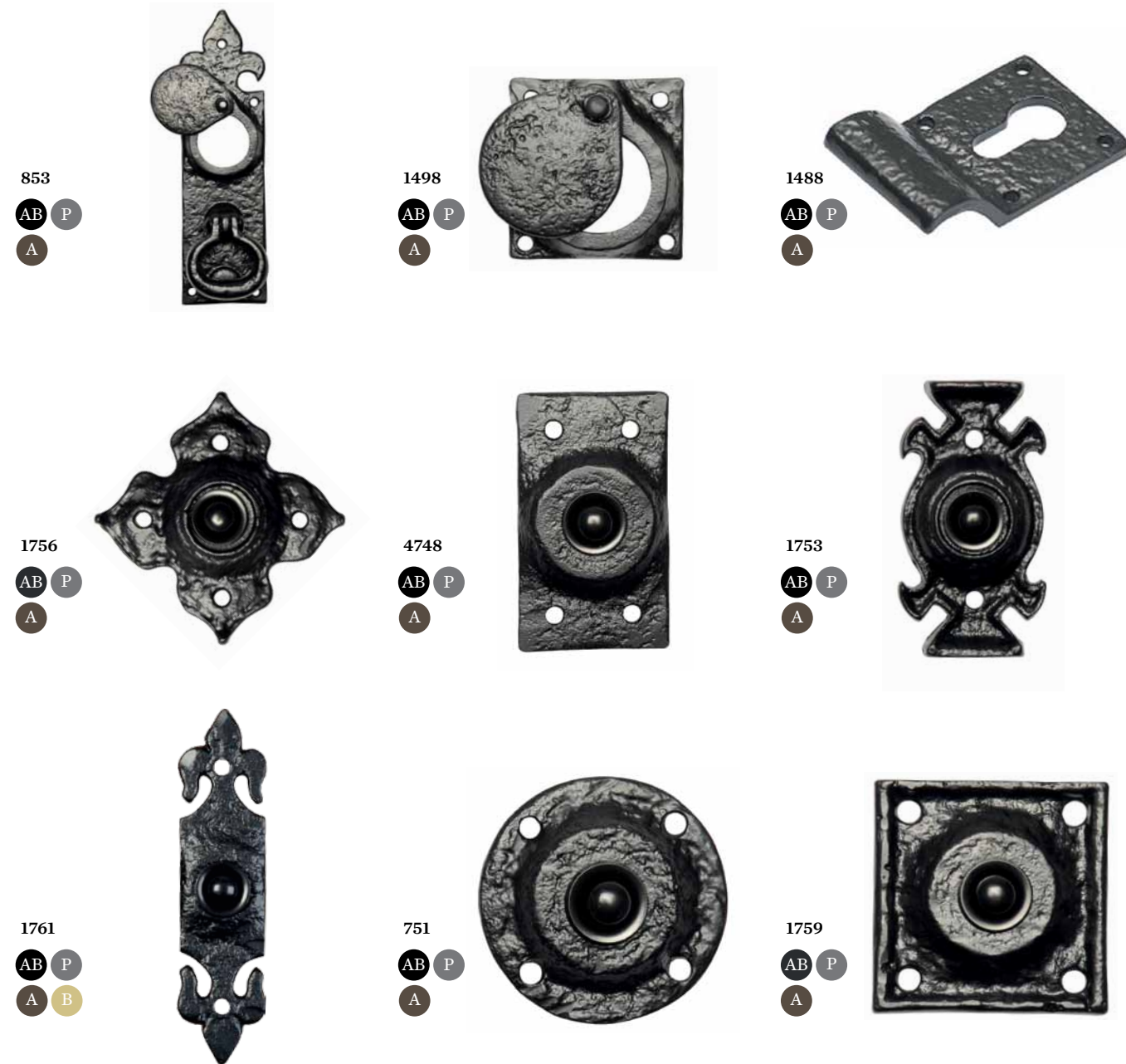
Cylinder latch cover  
65 x 58mm (2 1/2" x 2 1/4")

**1487**

Cylinder latch cover/pull  
127 x 58mm (5" x 2 1/2")



DOOR AND GATE FURNITURE  
DOOR ACCESSORIES



**853**  
Cylinder latch knocker  
197 x 57mm (7 3/4" x 2 1/4")

**1756**  
Bell push – 85 x 85mm (3 1/4" x 3 1/4")  
Supplied with electrical contacts

**1761**  
Bell push – 121 x 32mm (4 3/4" x 1 1/4")  
Supplied with electrical contacts

**1498**  
Cylinder latch cover  
58 x 58mm (2 5/16" x 2 5/16")

**4748**  
Bell push – 77 x 44mm (3" x 1 3/4")  
Supplied with electrical contacts

**751**  
Bell push – 57 x 57mm (2 1/4" x 2 1/4")  
Supplied with electrical contacts

**1488**  
Euro cylinder latch pull  
Backplate – 85 x 50mm (3 3/8" x 2")  
Projection – 20mm (3/4")  
To be used with a Euro profile cylinder

**1753**  
Bell push – 89 x 44mm (3 1/2" x 1 3/4")  
Supplied with electrical contacts

**1759**  
Bell push – 60 x 60mm (2 3/8" x 2 3/8")  
Supplied with electrical contacts



**1481**  
Security latch pull – through version  
70 x 50mm (2 3/4" x 2")

**1482**  
Security latch pull – concealed version  
70 x 50mm (2 3/4" x 2")

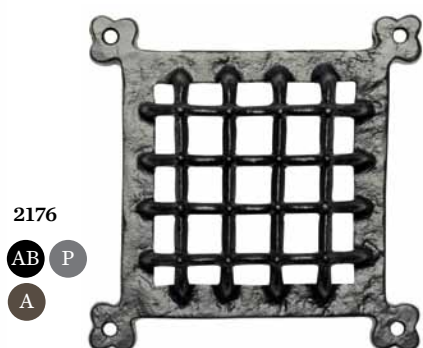


DOOR AND GATE FURNITURE  
DOOR ACCESSORIES



2175

AB P  
A



2176

AB P  
A



1190

AB P  
A



1081

AB P  
A B



153

AB P  
A B



1502

AB P  
A B



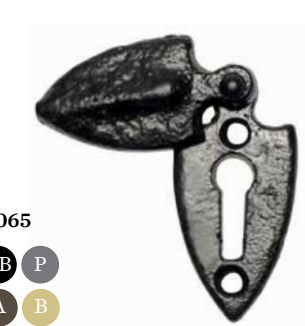
1490

AB P  
A



1503

AB P  
A



1065

AB P  
A B

**2175**  
Square door grille - 171 x 171mm (6 3/4")

**1081**  
Door stud. Drive or screw  
Head - 16mm (5/8"), 19mm (3/4"),  
22mm (7/8"), 25mm (1")

**1490**  
Escutcheon - 44 x 30mm (1 3/4" x 1 1/8")

**2176**  
Square door grille  
165 x 165mm (6 1/2") or 304 x 304mm (12")

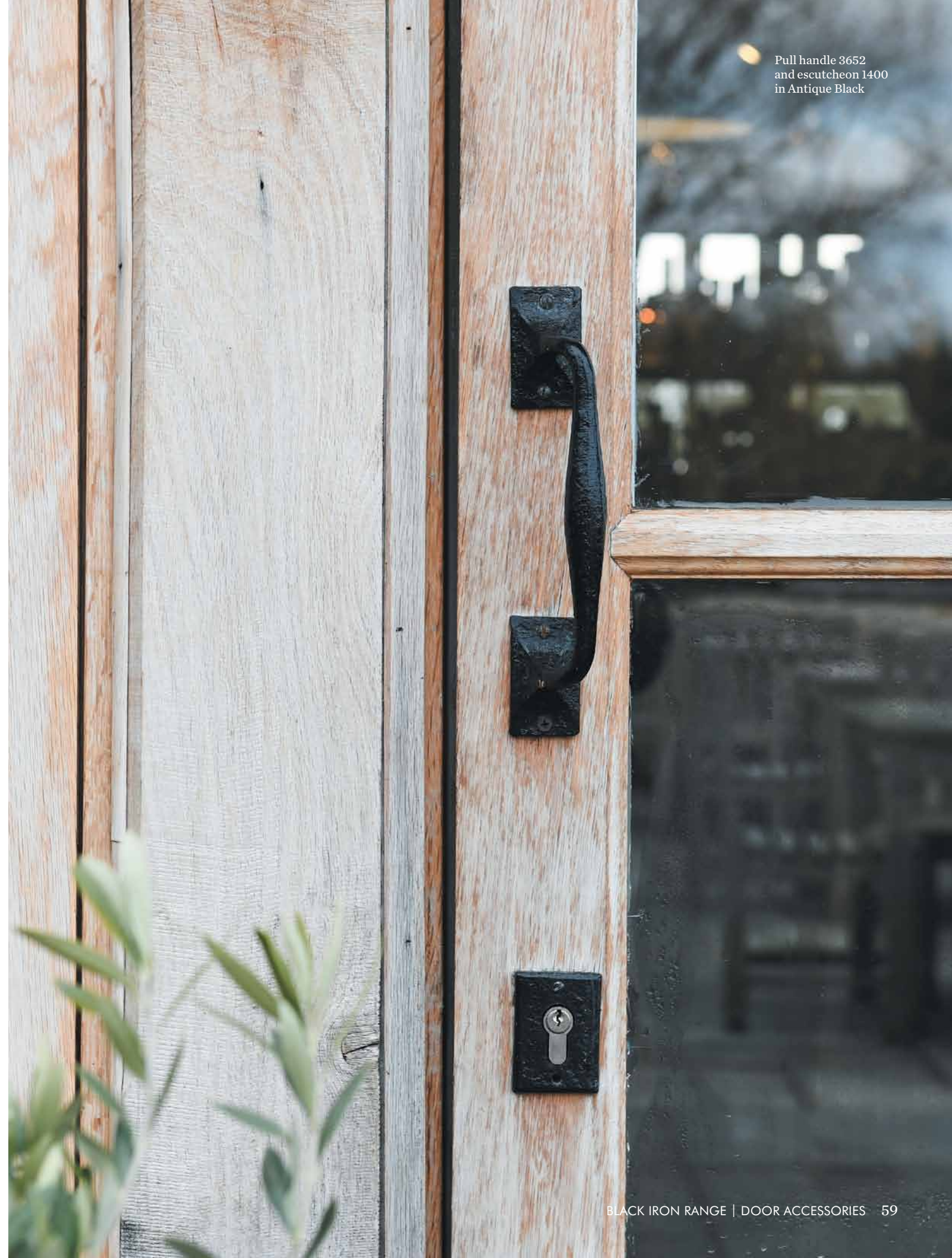
**153**  
Door stud. Screw  
Head - 22mm (7/8")

**1503**  
Escutcheon - 48 x 35mm (1 7/8" x 1 3/8")

**1190**  
Escutcheon - 48 x 25mm (1 7/8" x 1")

**1502**  
Escutcheon - 45 x 30mm (1 3/4" x 1 1/8")

**1065**  
Escutcheon - 54 x 25mm (2 1/8" x 1")



Pull handle 3652  
and escutcheon 1400  
in Antique Black

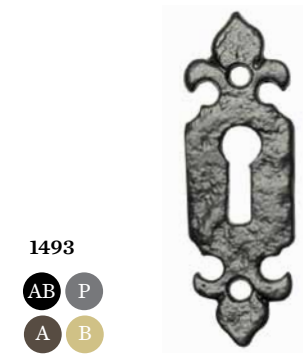




1504  
AB P  
A



3012  
SB P  
A



1493  
AB P  
A B



1977  
AB P  
A



1855



3011  
AB P  
A



1401  
AB P  
A B



1400  
AB P  
A



1976  
AB P  
A



777



3045  
SB P  
A



5136  
SB P



Cylinder 6000



1979  
AB P  
A B

**1504**  
Escutcheon – 50 x 38mm (2" x 1 1/2")  
**3011**  
Escutcheon – 44 x 32mm (1 3/4" x 1 1/4")  
**3045**  
Escutcheon – 50mm (2")

**3012**  
Steel escutcheon – 48mm (1 7/8")  
**1401**  
Escutcheon with Euro profile  
50 x 50mm (2" x 2")  
**5136**  
Door stop – 89mm (3 1/2")

**1493**  
Escutcheon – 73 x 25mm (2 7/8" x 1")  
**1400**  
Escutcheon with Euro profile  
70 x 50mm (2 3/4" x 2")  
**Cylinder 6000**  
Black double cylinder or thumb turn and  
single cylinder. Keyed alike, keyed to differ or  
master keyed. Odd sizes available in multiples  
of 5mm. Please ask for details.

**1977**  
House numerals and letters (A to Z & 0 to 9) – 50mm (2")  
**1976**  
House numerals and letters (A to Z & 0 to 9) – 45mm (1 3/4")  
**1979**  
House numerals and letters (A to Z & 0 to 9)  
50mm (2"), 76mm (3") 101mm (4"), 152mm (6")  
Styles may vary according to size, please refer to our  
website for further details.

**1855**  
Old English style name plates. Gold on black.  
This is an approximate guide as capitals are larger than lower case letters and  
spaces must be allowed for between words. Our pattern shop will make your  
individual plate on the most appropriate size for the best results. For longer names  
it may be better to use two plates alongside each other or one above the other.  
**777**  
Also available in gold on black. Supplied with chain (not shown)  
368 x 73mm (14 1/2" x 2 7/8")



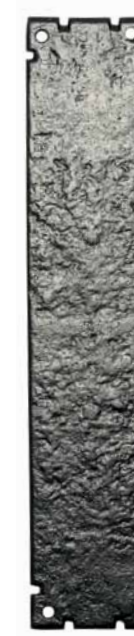
DOOR AND GATE FURNITURE  
DOOR ACCESSORIES



770  
AB P  
A



2156  
AB P  
A



769  
AB P  
A B



768  
AB P  
A



4146  
SB P

**770**  
Door finger plate  
304 x 57mm (12" x 2 1/4")

**2156**  
Door finger plate  
339 x 73mm (13 3/8" x 2 7/8")

**769**  
Door finger plate  
304 x 63mm (12" x 2 1/2")

**768**  
Door finger plate  
222 x 73mm (8 3/4" x 2 7/8")

**4146**  
Door kicking plate  
Plain pattern manufactured  
from steel not iron  
Various sizes available



# GATE FITTINGS

## GATE STOPS, CATCHES, LOCKING BARS/ HASP AND STAPLES



**582**  
Automatic door catch  
76mm (3")  
**2761**  
Gate catch  
317mm (12 1/2")  
**4195**  
Hasp and staple  
152 x 127 x 57mm (6" x 5" x 2 1/4")  
Also available in a galvanised finish

**2758**  
Gate stop  
Length - 210mm (8 1/4")  
Height - 178mm (7")  
**2760**  
Gate stop  
Length - 121mm (4 3/4")  
Width - 95mm (3 3/4")  
Height - 76mm (3")  
Opening - 64 x 50mm (2 1/2" x 2")  
**4196**  
Hasp and staple  
127 x 83 x 29mm (5" x 3 1/4" x 1 1/8")  
Also available in a galvanised finish

**179/180**  
Gate stop with cement fixing (as shown - 179)  
Gate stop with floor plate fixing (180)  
Length - 330mm (13")  
Height - 254mm (10")  
**1736**  
Parliament hinge  
102 x 102mm (4" x 4")  
127 x 102mm (5" x 4")  
152 x 102mm (6" x 4")

**1127**  
101mm (4"), 127mm (5"), 152mm (6")  
**3416**  
Safety hasp & staple  
Closed - 101 x 50mm (4 x 2")  
or 152 x 50mm (6 x 2")  
**4290**  
152 x 38mm (6" x 1 1/2")  
203 x 38mm (8" x 1 1/2")  
254 x 41mm (10" x 1 5/8")  
305 x 44mm (12" x 1 3/4")  
356 x 48mm (14" x 1 7/8")  
406 x 51mm (16" x 2")  
457 x 60mm (18" x 2 3/8")  
508 x 60mm (20" x 2 3/8")

**1637**  
76mm (3"), 101mm (4"), 152mm (6"),  
203mm (8"), 254mm (10"), 305mm (12"),  
356mm (14"), 406mm (16"), 457mm (18")  
**4509**  
Trap door hinge  
330 x 203mm (13" x 8") or  
381 x 203mm (15 3/4" x 8")  
**3430**  
Locking bar  
254 x 41mm (10" x 1 5/8")  
305 x 44mm (12" x 1 3/4")  
356 x 48mm (14" x 1 7/8")  
406 x 51mm (16" x 2")

**1011**  
76mm (3"), 101mm (4"), 152mm (6"),  
203mm (8"), 254mm (10"), 305mm (12"),  
356mm (14"), 406mm (16"), 457mm (18")  
**3413**  
152 x 38mm (6" x 1 1/2")  
203 x 38mm (8" x 1 1/2")  
254 x 38mm (10" x 1 1/2")  
305 x 38mm (12" x 1 1/2")  
381 x 38mm (15" x 1 1/2")  
457 x 38mm (18" x 1 1/2")  
**3665**  
610 x 64mm (24" x 2 1/2")  
762 x 64mm (30" x 2 1/2")  
915 x 64mm (36" x 2 1/2")





## WINDOW FURNITURE CASEMENT FASTENERS



1028

AB P  
A



1027

AB P  
A



1182

AB P  
A



1121

AB P  
A B



1121W

AB P  
A



1166

AB P  
A B



906/906A

AB P  
A



838

AB P  
A



1185

AB P  
A



Casement fastener 1182 and casement stay 1184 in Antique Black

**1028**  
Hook & mortice – 95 x 67mm (3 3/4" x 2 3/4")

**1121**  
Hook & mortice. Reversible  
Matches 857 casement stay  
Backplate – 60 x 21mm (2 3/8" x 7/8")  
Available in Smooth Black – 859

**906 (Mortice) / 906A (Hook)**  
Hook & mortice. Reversible  
Backplate – 60 x 21mm (2 3/8" x 7/8")

**1027**  
Hook & mortice – 152 x 114mm (6" x 4")

**1121W**  
Wedge fastener  
Available as left or right handed  
Matches 857 casement stay  
57 x 17mm (2 1/4" x 5/8")

**838**  
Hook & mortice  
Available as left or right handed  
Matches 857 casement stay  
Backplate – 65 x 21mm (2 1/2" x 7/8")

**1182**  
Hook & mortice. Reversible  
Matches 1184 casement stay  
Backplate – 60 x 21mm (2 3/8" x 7/8")

**1166**  
Lockable  
Available as left or right handed  
Matches 857 casement stay  
57 x 17mm (2 1/4" x 5/8")

**1185**  
Hook & mortice. Reversible  
Matches 1183 casement stay  
Backplate – 65 x 21mm (2 1/2" x 7/8")

See glossary (p127) to understand the difference between hook and mortice plates.



WINDOW FURNITURE  
CASEMENT FASTENERS



1177  
AB P  
A



1193  
AB P  
A



1601  
AB P  
A



1165  
AB P  
A



1167  
AB P  
A



1170  
AB P  
A



1181  
AB P  
A B



1181NVL  
AB P  
A



1176  
AB P  
A

**1177**  
Hook & mortice. Reversible  
Backplate - 60 x 21mm (2 3/8" x 7/8")

**1165**  
Lockable. Left or right handed  
Matches 1180 casement stay  
57 x 18mm (2 1/4" x 3/4")

**1181**  
Hook & mortice. Reversible  
Matches 1180 casement stay  
Backplate - 60 x 21mm (2 3/8" x 7/8")

**1193**  
Hook & mortice. Reversible  
Backplate - 60 x 21mm (2 3/8" x 7/8")

**1167**  
Three point lockable. Left or right handed  
Matches 1180 casement stay  
Backplate - 58 x 25mm (2 1/4" x 1")

**1181NVL**  
Lockable night vent fastener.  
Left or right handed  
Matches 1180 casement stay  
Backplate - 81 x 18mm (3 1/4" x 3/4")  
Non-locking version also available

**1601**  
Hook & mortice. Left or right handed  
Matches 1600 casement stay  
Backplate - 20 x 58mm (3/4" x 2 1/4")

**1170**  
Lockable. Left or right handed  
Matches 1180 casement stay  
Backplate - 70 x 21mm (2 3/4" x 7/8")

**1176**  
Raised tongue fastener suitable for fitting  
to windows with draught excluder  
Matches 1180 casement stay  
Backplate - 60 x 22mm (2 3/8" x 7/8")

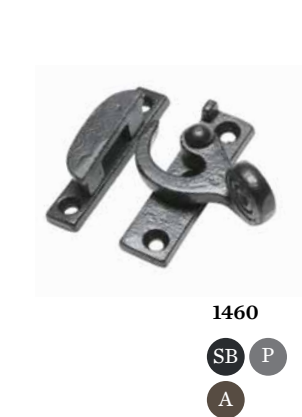
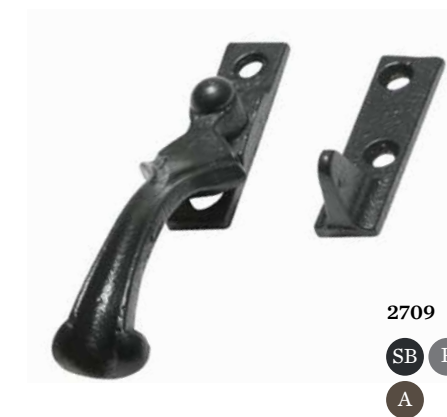
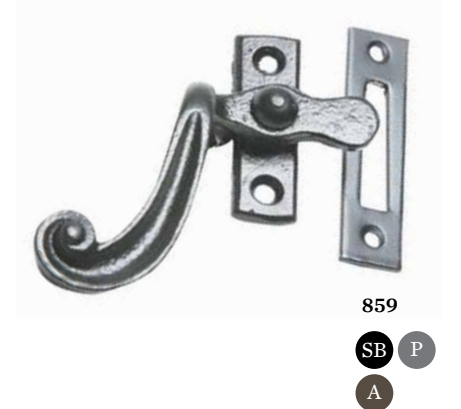


Casement fastener 1601 in Pewter





## WINDOW FURNITURE CASEMENT FASTENERS



**2723**  
Locking catch  
Matches 857 casement stay  
Backplate - 55 x 28mm (2 1/8" x 1 1/8")  
Locking snib plate - 55 x 20mm (2 1/8" x 3/4")

**140/141**  
Hook (141) & mortice (140)  
Matches 171 casement stay  
Backplate - 85 x 25mm (3 3/8" x 1")

**2709**  
Matches 504 casement stay  
Backplate - 55 x 15mm (2 1/8" x 5/8")

**3365**  
Hook & mortice. Reversible  
Matches 1312 casement stay  
Backplate - 57 x 20mm (2 1/4" x 3/4")

**144/145**  
Hook (145) & mortice (144)  
Matches 171 casement stay  
Backplate - 55 x 25mm (2 1/8" x 1")

**1460**  
Sash window fastener  
Plate - 70 x 20mm (2 3/4" x 7/8")  
Catchplate - 68 x 15mm (2 3/4" x 5/8")

**859**  
Hook & mortice. Reversible  
Matches 858 casement stay  
Backplate - 60 x 21mm (2 3/8" x 7/8")  
Available in Antique Black - 1121

**146/147**  
Hook (147) & mortice (146). Lockable  
Left or right handed available  
Matches 171 casement stay  
Backplate - 68 x 19mm (2 5/8" x 3/4")

**1557** Window fastener  
73 x 26mm (2 7/8" x 1")

**1132** Window fastener  
60 x 15mm (2 3/8" x 5/8")



WINDOW FURNITURE  
CASEMENT FASTENERS



**1171**  
AB P  
A



**1168**  
AB P  
A



**1169**  
AB P  
A



**1031**  
AB P  
A

**1171**  
Lockable espagnolette fixing. Narrow backplate suitable for UPVC windows  
Matches 1180 casement stay  
Left or right handed  
Backplate - 70 x 16mm (2 3/4" x 5/8")  
Handle length - 98mm (3 7/8")

**1031**  
Lockable espagnolette fixing. Narrow backplate suitable for UPVC windows  
Matching casement stay available  
Left or right handed  
Backplate - 70 x 16mm (2 3/4" x 5/8")  
Handle length - 127mm (5")

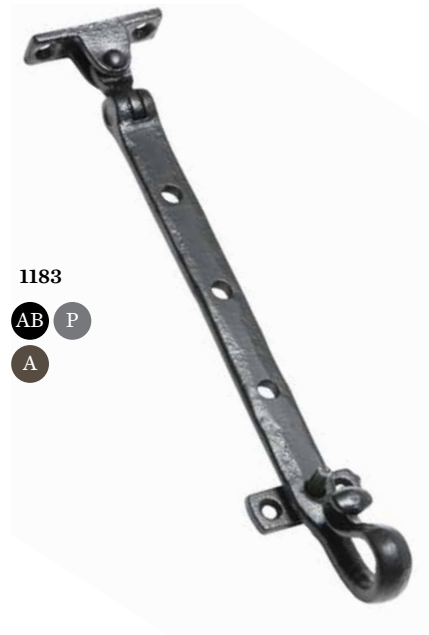
**1168**  
Lockable espagnolette fixing. Narrow backplate suitable for UPVC windows  
Matches 1180 casement stay  
Left or right handed  
Backplate - 70 x 16mm (2 3/4" x 5/8")  
Handle length - 128mm (5")

**1169**  
Lockable espagnolette fixing. Narrow backplate suitable for UPVC windows  
Matches 1312 casement stay  
Left or right handed  
Backplate - 70 x 16mm (2 3/4" x 5/8")  
Handle length - 128mm (5")



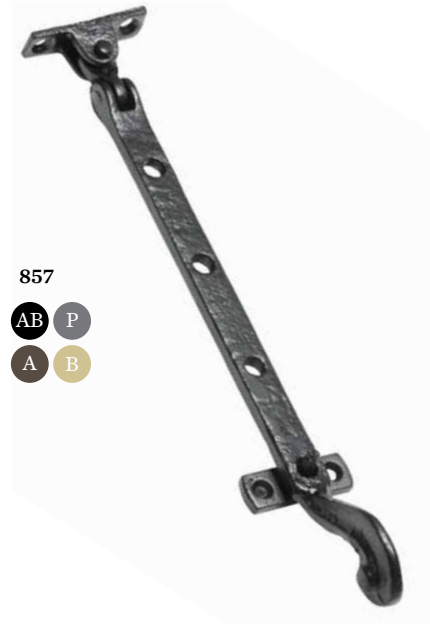


# WINDOW FURNITURE CASEMENT STAYS



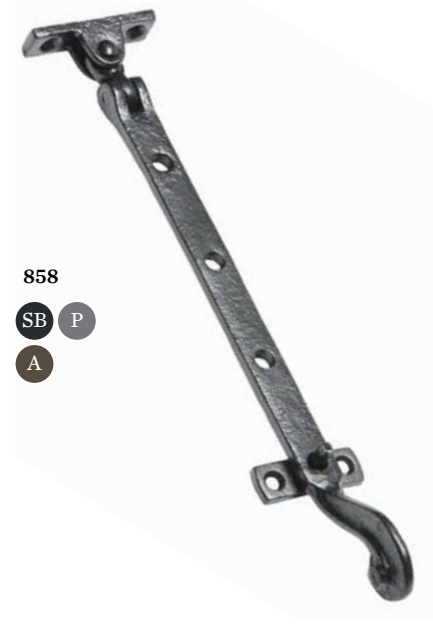
1183

AB P  
A



857

AB P  
A B

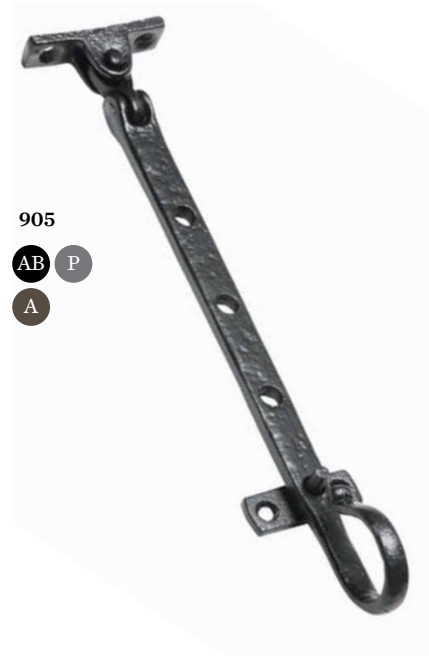


858

SB P  
A



Casement stay 857 in Argent



905

AB P  
A



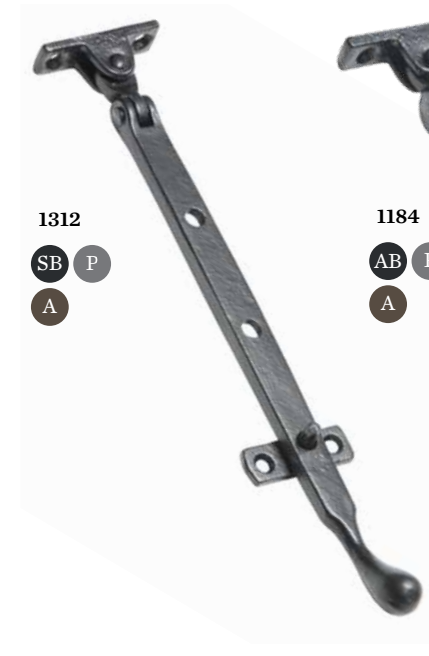
1180

AB P  
A B



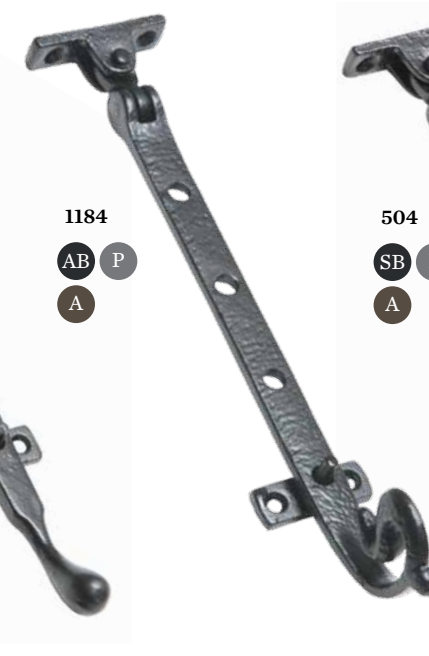
171

SB P  
A B



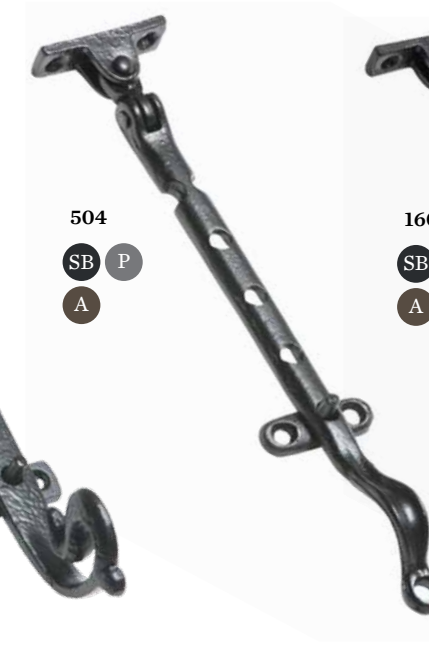
1312

SB P  
A



1184

AB P  
A



504

SB P  
A



1600

SB P  
A

**1183**  
Matches 1185 fastener  
(8"), 254mm (10"), 304mm (12")

**905**  
254mm (10") or 304mm (12")

**857**  
Matches 1121 fastener  
191mm (7"), 228mm (9"),  
279mm (11"), 330mm (13")

**1180**  
Matches 1181 fastener  
203mm (8"), 254mm (10"), 304mm (12")

**858**  
Matches 859 fastener  
279mm (11") or 330mm (13")

**171**  
Matches 144/45 & 146/147 fasteners  
152mm (6"), 203mm (8"),  
254mm (10"), 305mm (12")

**1312**  
Matches 3365 fastener  
203mm (8"), 254mm (10"),  
305mm (12")

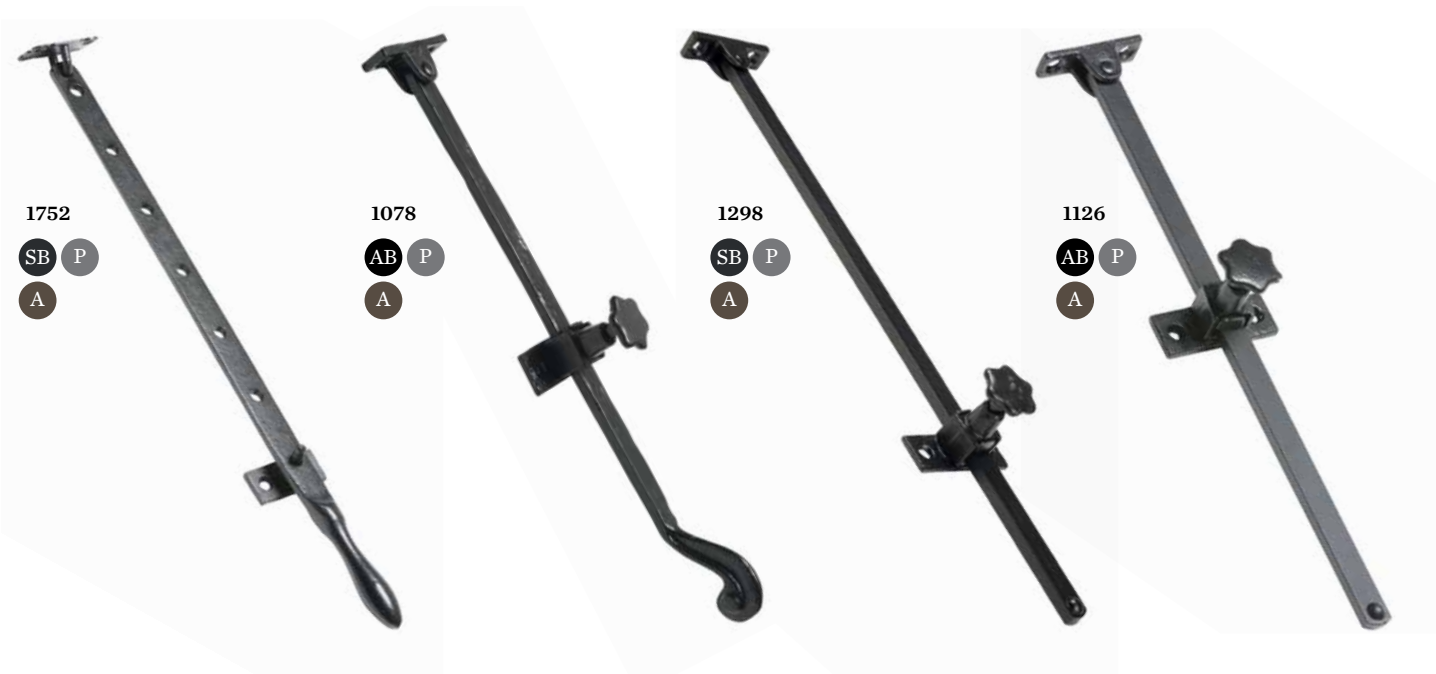
**1184**  
Matches 1182 fastener  
203mm (8"), 254mm (10"),  
304mm (12")

**504**  
Matching items available  
254mm (10")

**1600**  
Matches 1601 fastener  
304mm (12")



# WINDOW FURNITURE CASEMENT STAYS

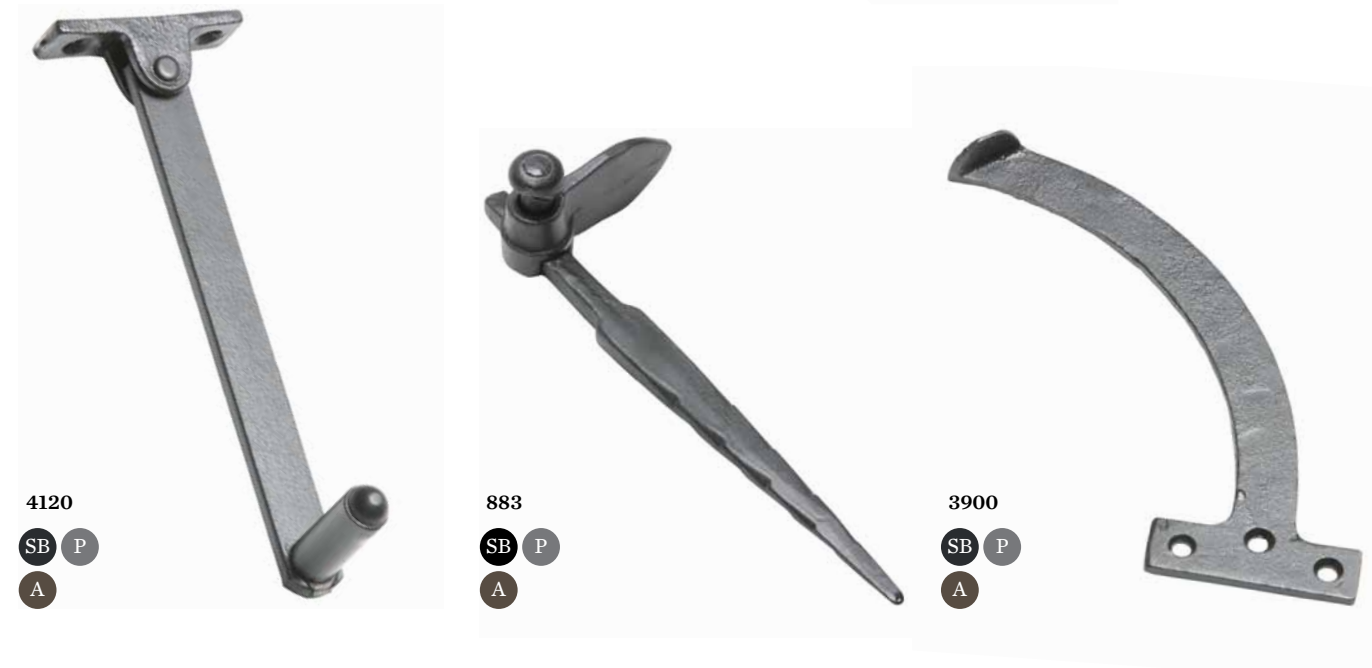


**1752**  
SB P  
A

**1078**  
AB P  
A

**1298**  
SB P  
A

**1126**  
AB P  
A



**4120**  
SB P  
A

**883**  
SB P  
A

**3900**  
SB P  
A



**3754**  
SB P  
A B



**672**  
AB P  
A



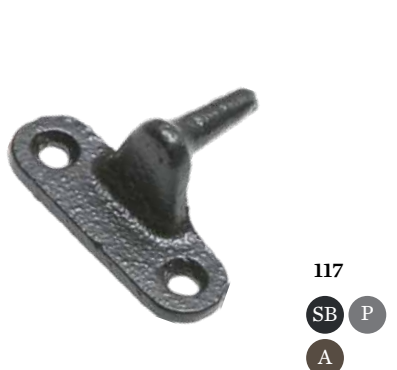
**3475**  
SB P  
A



**3998**  
SB P  
A



**116**  
SB P  
B



**117**  
SB P  
A



**607A**  
SB P  
A

**607**  
SB P  
A



**5182**



**5145**

**5146**  
AB P

**1752**  
Skylight stay  
254mm (10"), 305mm (12")  
381mm (15"), 457mm (18")  
533mm (21"), 610mm (24")  
686mm (27"), 762mm (30")  
915mm (36"), 1066mm (42")  
1220mm (48")

**1078**  
279mm (11") or 330mm (13")  
**883**  
Shutter flap. Reversible  
Spike - 178mm (7")

**1298**  
152mm (6"), 203mm (8"),  
254mm (10"), 305mm (12")  
381mm (15")  
**3900**  
178mm (7") or 216mm (8")

**1126**  
Screw down  
254mm (10"), 304mm (12"),  
381mm (15")

**3754**  
Fanlight catch. Flush or recessed  
127mm (5") or 178mm (7")

**3998**  
Rule jointed stay  
Open - 254mm (10") or 305mm (12")

**607A/607**  
Spring fanlight catch with gun metal shoots  
32 x 44mm (1 1/4" x 1 3/4")

**672**  
Shutter fastener - 133 x 50mm (5 1/4" x 2")  
Spike - 108mm (4 1/4")

**116**  
Locking pivot

**5182**  
Window restrictor  
White (5182)  
Dark brown (5180)  
Light brown (5181)

**3475**  
Shutter flap - 152 x 50mm (6" x 2")  
Spike - 108mm (4 1/4")

**117**  
Side fixing pivot

**5145**  
Rack bolt key

**5146**  
Window rack bolt



# CABINET AND DRAWER FURNITURE HANDLES



997  
AB P  
A



1528  
AB P  
A



1217  
AB P  
A



1013  
AB P  
A



1192  
AB P  
A



985  
AB P  
A



1137  
AB P  
A



1543  
AB P  
A



834  
AB P  
A



932  
AB P  
A

**997**  
Drawer handle  
55 x 45mm (2 1/5" x 1 4/5")

**1013**  
Drawer handle  
Diameter - 35mm (1 2/5")

**1137**  
Turn button - 62mm (2 1/2")

**1543**  
Drawer handle  
Diameter - 42mm (1 5/8")

**1528**  
Drawer handle  
80 x 35mm (3 1/7" x 1 2/5")

**1192**  
Drawer handle  
40 x 40mm (1 4/7" x 1 4/7")

**834**  
Drawer pull  
Plate - 171 x 70mm (6 3/4" x 2 3/4")  
Handle - 127mm (5")

**1217**  
Drawer handle  
Diameter - 35mm (1 2/5")

**985**  
Drawer handle  
80 x 35mm (3 1/7" x 1 2/5")

**932**  
Hasp and staple  
148 x 77mm (5 7/8" x 3")

Handle 834 and hasp & staple 932  
in Antique Black



Drawer pulls 3960 and cupboard knobs 1135 in Antique Black



## CABINET AND DRAWER FURNITURE KNOBS AND PULLS



**1195**  
AB P  
A



**1949**  
SB P  
A



**1119**  
SB P  
A



**1135**  
AB P  
A



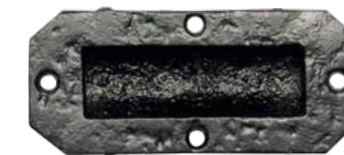
**2587**  
AB P  
A



**2586**  
AB P  
A



**1549**  
AB P  
A



**1194**  
AB P  
A



**3960**  
AB P  
A

**1195**  
Cupboard knob  
Bolt or screw - 35mm (1 3/8")  
Rose - 38mm (1 1/2")

**1135**  
Cupboard knob  
Screw - 25mm (1")

**1549**  
Drawer pull  
80 x 36mm (3 1/2" x 1 3/8")

**1949**  
Cupboard knob  
Diameter - 25mm (1")

**2587**  
Sash pull - 63mm (2 1/2")

**1194**  
Drawer pull  
Knob - 114 x 50mm (4 1/2" x 2")

**1119**  
Turn button - 62mm (2 1/2")

**2586**  
Sash pull  
79 x 31mm (3 1/8" x 1 1/4")  
Projection - 31mm (1 1/4")

**3960**  
Drawer pull - 108mm (4 1/4")



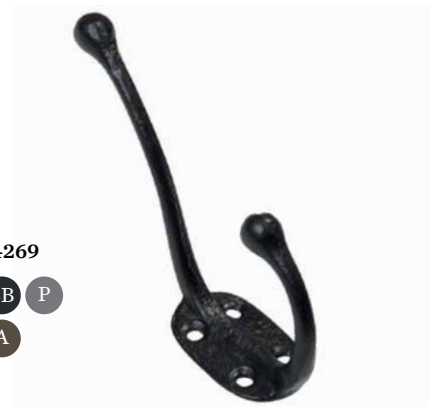
HOME ACCESSORIES  
HOOKS AND BRACKETS



734  
AB P  
A



837  
AB P  
A



4269  
SB P  
A



1129  
AB P  
A B



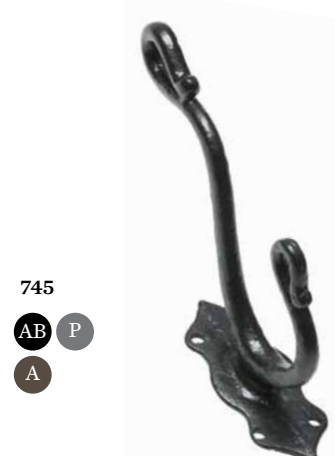
4463  
AB P  
A



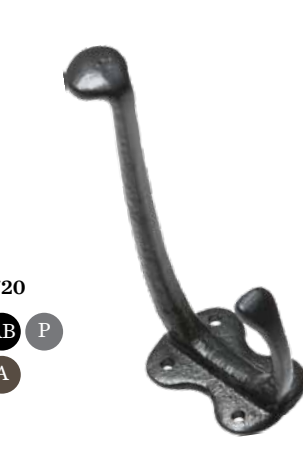
212  
SB P  
A



1130  
AB P  
A B



745  
AB P  
A



720  
AB P  
A

**734**  
Hat and coat hook  
101mm (4")

**1129**  
Coat hook  
Backplate - 40 x 40mm (1 1/2" x 1 1/2")  
Projection - 65mm (2 1/2")

**1130**  
Hat and coat hook  
152mm (6")

**837**  
Hat and coat hook  
127mm (5")

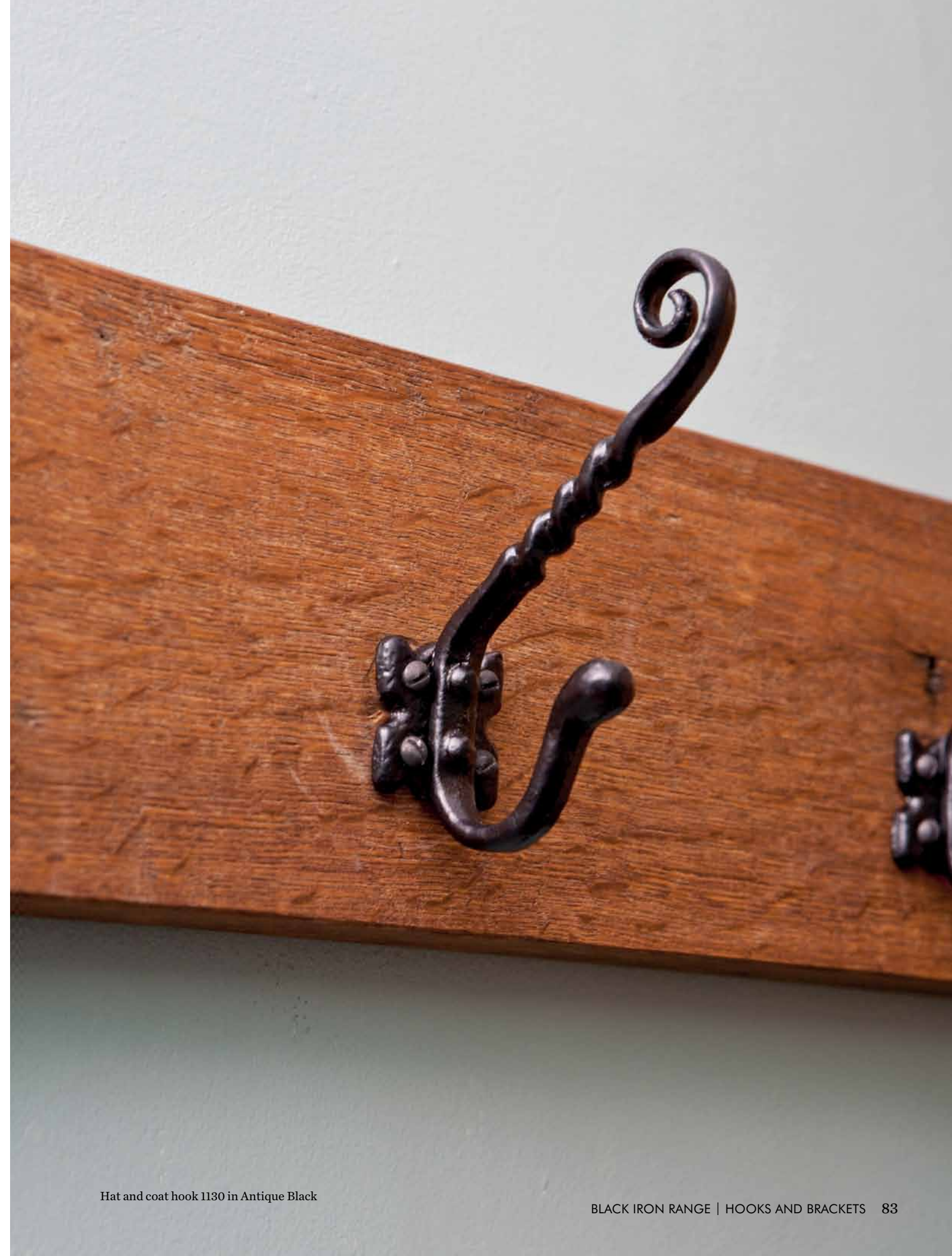
**4463**  
Fleur-de-lys hook  
Backplate - 54 x 54mm (2" x 2")  
Projection - 70mm (2 3/4")

**745**  
Hat and coat hook  
152mm (5 1/4")

**4269**  
Hat and coat hook  
140 x 76mm (5 1/2 x 3")

**212**  
Hat and coat hook  
152mm (6")

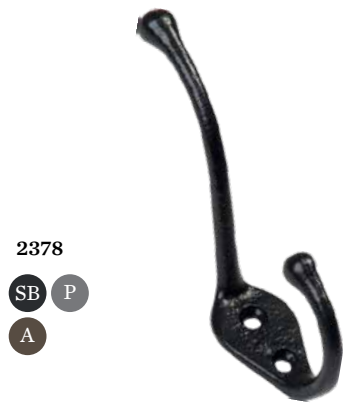
**720**  
Hat and coat hook  
152mm (6")



Hat and coat hook 1130 in Antique Black



HOME ACCESSORIES  
HOOKS AND BRACKETS



2378  
SB P  
A



357  
SB P  
A



1173  
AB P  
A B



836  
AB P  
A



1174  
AB P  
A B



1238  
AB P  
A



3491  
SB P  
A



3498  
SB P  
A



3499  
SB P  
A



3497  
AB P  
A



3001  
AB P  
A



5130  
AB P  
A



5131  
AB P  
A



Shelf unit 5131  
in Antique Black

**2378**  
Hat and coat hook  
146 x 76mm (5 3/4" x 3")  
Projection - 70mm (2 3/4")

**836**  
Coat hook  
Backplate - 50 x 50mm (2" x 2")  
Projection - 70mm (2 3/4")

**3491**  
Handrail bracket  
50mm (2"), 64mm (2 1/2"), 76mm (3")

**357**  
Coat hook - 50 x 24mm (2" x 1")  
Projection - 50mm (2")

**1174**  
Coat hook - 80 x 50mm (3 1/8" x 2")  
Projection - 35mm (1 3/8")

**3498**  
Handrail bracket  
50mm (2"), 64mm (2 1/2"), 76mm (3")

**1173**  
Coat hook - 50 x 24mm (2" x 1")  
Projection - 50mm (2")

**1238**  
Picture hook - 45mm (1 3/4")  
Projection - 20mm (3/4")

**3499**  
Extra strong handrail bracket  
64mm (2 1/2") or 83mm (3 1/4")

**3497**  
Handrail bracket  
Projection - 50mm (2")

**3001**  
Toilet roll holder  
Backplate - 85 x 85mm (3 1/4" x 3 1/4")  
Arm - 230mm overall

**5130**  
Clothes rack/airer  
Length - 1,524 mm (60")  
Brackets - 349mm (13 3/4")

**5131**  
Shelf unit  
609mm (24"), 914mm (36"),  
1,219mm (48"), 1,524mm (60")  
Bracket length - 180mm (7 1/16")  
Projection - 225mm (8 7/8")



HOME ACCESSORIES  
LIGHTING



401/400

AB P  
A



406

AB P  
A



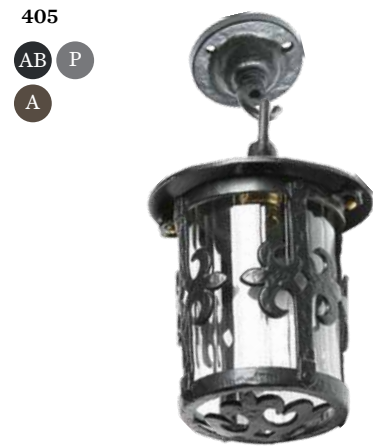
403

AB P  
A



407

AB P  
A



405

AB P  
A

**401**  
Hanging wall lantern with hexagonal cage  
552 x 15mm (21 3/4" x 5/8")  
Plate - 254 x 50mm (10" x 2")  
Canopy - 190mm (7 1/2")

**403**  
Hanging wall lantern  
Supplied with wall bracket and ceiling rose  
or corner bracket  
Plate - 260 x 44mm (10 1/4" x 1 3/4")  
Frame - 203 x 114mm (8" x 4 1/2")

**400**  
Hanging wall lantern with square cage  
177 x 177mm (7" x 7"),  
Plate - 254 x 50mm (10" x 2")  
Canopy - 228 x 228mm (9" x 9")

**407**  
Hanging wall lantern with hexagonal cage  
Plate - 339 x 73mm (13" x 2 7/8")  
Projection - 200mm (8")  
Cage - 175 x 150mm (7" x 6")

**406**  
Wall light  
Bracket only supplied, not wired  
Candle drips, bulbs or shades not included  
Twin - 263 x 276mm (10 3/8" x 10 7/8")  
Single - 263 x 148mm (10 7/8" x 5 3/4")

**405**  
Hanging wall lantern  
Supplied with wall bracket & ceiling rose  
or corner bracket  
Frame - 203 x 114mm (8" x 4 1/2")  
Height - 304mm (12")



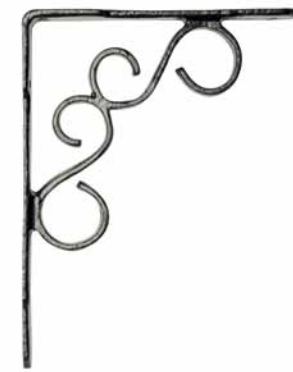
Single wall light 406 in Antique Black



# HOME ACCESSORIES PATIO AND FIRESIDE



Coal tongs 3023 and fire poker 4185 in Antique Black. Beetle shoe remover 5005 in Smooth Black



813  
AB P  
A



3612  
AB P  
A



3600  
SB P  
A



4601  
AB P  
A



4342  
SB P  
A



4359  
SB P  
A



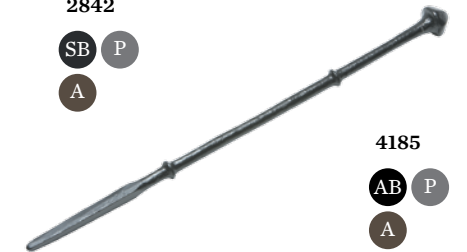
5005  
SB



3023  
AB P  
A



2842  
SB P  
A



4185  
AB P  
A

**813**  
Wall bracket  
101 x 76mm (4" x 3")  
152 x 127mm (6" x 5")  
222 x 173mm (9" x 7")

**4601**  
Basket hook  
Projection - 228mm (9"),  
304mm (12"), 381mm (15")

**5005**  
Beetle shoe remover  
240 x 130 (9 1/2 x 5")

**3612**  
Flower pot holder  
260 x 190mm (10 1/4" x 7 1/2")

**4342**  
Boot scraper  
Height - 356mm (14")  
Width - 196mm (7 3/4")

**3023**  
Coal tongs  
277mm (11 1/2")

**2842**  
Fork, broom & shovel holder  
Projection - 76mm (3")  
Plate - 114 x 51mm (4 1/2" x 2")

**3600**  
Basket hook  
152mm (6"), 203mm (8"),  
254mm (10"), 305mm (12")

**4359**  
Boot scraper  
Width - 356mm (14")  
Depth - 330mm (13")

**4185**  
Fire poker  
457mm (18")



KIRKPATRICK IN SITU

# THE INN AT SHIPLEY

Brunning & Price

Kirkpatrick products have been introduced into nearly every room in *The Inn at Shipley*. Situated in a beautiful location on the outskirts of Wolverhampton, it is an original Georgian building that oozes the charm and character of a British country pub. Whether visiting for a refreshing beverage or a bite to eat, you are sure to receive a warm welcome.

Lovingly restored and refurbished by Brunning and Price to maintain the unique heritage of this beautiful building, the interior boasts period features including traditional fireplaces and oak beams – complimented by Kirkpatrick antique black iron of course.

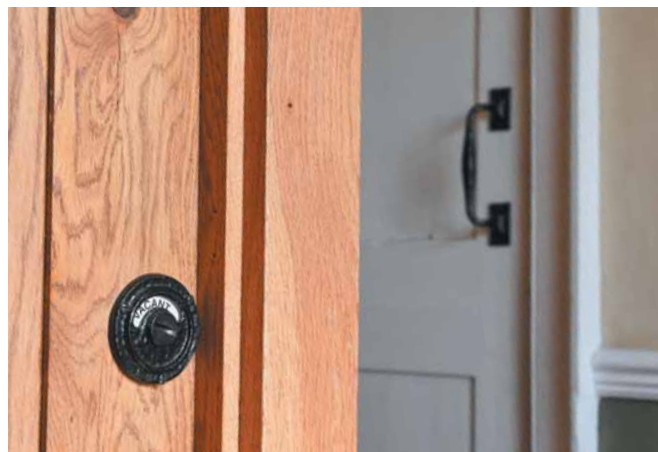
Throughout the main dining area our traditional style window furniture fits in beautifully alongside a variety of pull handles and push plates. So much so that Brunning and Price has fitted a wide variety of our British-made ironmongery through a number of their pubs.

[www.brunningandprice.co.uk/innatshipley](http://www.brunningandprice.co.uk/innatshipley)



Pull handle 3652 and escutcheon 1400; door bolts 4321 all in Antique Black





Our ironmongery compliments any style of window or door, so if you are looking for a traditional finish like these shown in this case study or for a contemporary style our British handcrafted ironmongery will be a beautiful addition to your British home.

Left page, clockwise from top: Casement fasteners 1121 and stays 857; fireside accessories; privacy bolt 1150; casement fasteners 140/141 and stays 1180 all in Antique Black. Right page: Casement stays 857 in Antique Black





# BLACKSMITH FORGE RANGE

- 96 Door furniture
- 100 Window furniture
- 102 Hooks and handles

*The traditional handcrafted nature of our production process means that all listed sizes are approximate.*





## BLACKSMITH FORGE RANGE DOOR FURNITURE

6058

SB P  
A



6080

SB P  
A



6050/6051

SB P  
A



6052/6053

SB P  
A



6081

SB P  
A



**6058**

Ring knocker  
Backplate – 115mm (4 1/2")  
Ring – 110mm (4 3/8")

**6050/6051**

Lever handle  
Sprung (6050) – lock, latch or bathroom  
Unsprung (6051) – lock, latch or Euro  
270 x 38mm (10 3/4" x 1 1/2")

**6080**

Letter plate  
Outside – 267 x 114mm (10 1/2" x 4 1/2")  
Opening – 203 x 41mm (8" x 1 5/8")  
Fixing bolt centres – 235mm (9 1/4")

**6052/6053**

Lever handle  
Sprung (6052) – Lock, latch or bathroom  
Unsprung (6053) – Lock, latch or Euro  
240 x 40mm (9 3/8" x 1 5/8")

**6081**

Cylinder pull  
Backplate – 85 x 50mm (3 3/8" x 2")  
Projection – 20mm (3/4")



# BLACKSMITH FORGE RANGE DOOR FURNITURE



**6059**  
SB P  
A



**6068**  
SB P  
A



**6082**  
SB P  
A



**6057**  
SB P  
A



**6056**  
SB A



**6071**  
SB A

**6059**  
Bolt - straight or cranked  
102mm (4"), 152mm (6")

**6057**  
Door hinge  
152mm (6"), 229mm (9"), 305mm (12"),  
381mm (15"), 457mm (18"), 559mm (22")  
Butt - 95mm (3 3/4")

**6068**  
Bolt - straight or cranked  
102mm (4"), 152mm (6")

**6056**  
Thumb latch set  
Handle - 205mm (8")  
Latch bar - 185mm (7 1/2")

**6082**  
Door hinge  
152mm (6"), 229mm (9")  
305mm (12"), 381mm (15")  
457mm (18"), 559mm (22")  
Butt - 95mm (3 3/4")

**6071**  
Thumb latch set  
Handle - 185mm (7 1/2")  
Latch bar - 185mm (7 1/2")

*See glossary (p127) to understand the difference between straight and cranked.*



BLACKSMITH FORGE RANGE  
WINDOW FURNITURE



6069

SB P  
A



6070

SB P  
A



6062

SB P  
A



6063

SB P  
A

**6069**  
Casement stay  
203mm (8"), 254mm (10"), 305mm (12")

**6070**  
Casement stay  
203mm (8"), 254mm (10"), 305mm (12")

**6062**  
Lockable casement fastener  
Hook or mortice. Left or right handed  
Fixing plate - 56 x 15mm (2 1/4" x 5/8")  
Handle length - 100mm (4")

**6063**  
Lockable casement fastener  
Hook or mortice. Left or right handed  
Fixing plate - 56 x 15mm (2 1/4" x 5/8")  
Handle length - 100mm (4")



Casement fastener 6063, casement stay 6070  
and casement stay 6069 all in Smooth Black



# BLACKSMITH FORGE RANGE

## HOOKS AND HANDLES



6064  
SB P  
A



6065  
SB P  
A



6060  
SB P  
A



6061  
SB P  
A



6067  
SB P  
A



6066  
SB P  
A

**6064**  
Coat hook  
Plate - 50 x 38mm  
(2" x 1 1/2")  
Projection - 54mm (2 1/8")

**6067**  
Hat and coat hook  
Plate - 80mm x 20mm  
(3 1/8" x 3/4")  
Projection - 60mm (2 3/8")

**6065**  
Coat hook  
Plate - 72 x 54mm  
(2 3/4" x 2 1/8")  
Projection - 58mm (2 1/4")

**6066**  
Coat hook  
Plate - 80 x 20mm  
(3 1/8" x 3/4")  
Projection - 45mm (1 3/4")

**6060**  
Pull handle  
102 x 23mm (4" x 7/8")  
152 x 32mm (6" x 1 1/4")  
203 x 38mm (8" x 1 1/2")

**6061**  
Pull handle  
102 x 30mm (4" x 1 3/16")  
152 x 40mm (6" x 1 9/16")  
203 x 52mm (8" x 2")



Hooks 6065 in Smooth Black and handles 6061 in Argent



# CAST BRASS RANGE

- 105 Door furniture
- 113 Window furniture
- 114 Hooks, handles and locks

*The traditional handcrafted nature of our production process means that all listed sizes are approximate.*



## CAST BRASS RANGE DOOR FURNITURE



**B4896**



**B2621**



**B1073**



**B1083**



**B1102**

**B4896**  
Lions head door knocker  
114 x 95mm (4 1/2" x 3 3/4")  
Ring - 101mm (4")

**B1073**  
Letter plate  
Outside - 362 x 88mm (14 1/4" x 3 1/2")  
Opening - 203 x 44mm (8" x 1 3/4")  
Fixing bolt centres - 277mm (10 3/4")

**B1102**  
Letter plate  
Internal flap - 292 x 76mm (11 1/2" x 3")

**B2621**  
Bat bedroom door knocker  
76 x 89mm (3" x 3 1/2")

**B1083**  
Letter plate  
Outside - 266 x 108mm (10 1/2" x 4 1/2")  
Opening - 203 x 44mm (8" x 1 3/4")  
Fixing bolt centres - 241mm (9 1/4")



CAST BRASS RANGE  
DOOR FURNITURE



B2439



B2439SP



B2450



B2454



B2451



B2561

**B2439**  
Lever handle  
Lock, latch or bathroom  
152 x 38mm (6" x 1 1/2")  
Short latch only - 101 x 38mm (4" x 1 1/2")  
**B2454**  
Lever handle  
Lock, latch or bathroom  
Plate - 164 x 47mm (6 1/2" x 1 7/8")

**B2439SP**  
Lever handle  
Short plate, latch only  
Plate 101 x 38mm (4" x 1 1/2")  
**B2451**  
Lever handle  
Lock, latch or bathroom  
164 x 47mm (6 1/2" x 1 7/8")

**B2450**  
Lever handle  
Lock, latch or bathroom  
Plate - 190 x 55mm (7 1/2" x 2 1/4")  
**B2561**  
Lever handle  
Lock - 140 x 38mm (5 1/2" x 1 1/2")  
Latch - 114 x 38mm (4 1/2" x 1 1/2")



Casement stay B1180 in Cast Brass



B3603



B564



B769



B2156

**B3603**  
Pull handle  
191 x 64mm (7 1/2" x 2 1/2")

**B564**  
Pull handle  
101mm (4"), 127mm (5"),  
152mm (6"), 177mm (7"),  
228mm (9")

**B769**  
Door finger plate  
304 x 63mm (12" x 2 1/2")

**B2156**  
Door finger plate  
339 x 73mm (13 3/8" x 2 7/8")



# CAST BRASS RANGE DOOR FURNITURE



**B926**  
Hinge – suitable for cabinet doors  
83 x 45mm (3 1/4" x 1 3/4")

**B814**  
Hinge  
152 x 63mm (6" x 2 1/2")  
263 x 101mm (10 1/2" x 4")  
313 x 101mm (12" x 4")  
388 x 101mm (15" x 4")  
456 x 101mm (18" x 4")

**B1155**  
Straight or cranked  
Plate – 152 x 45mm (6" x 1 3/4")  
or 203 x 54mm (8" x 2 1/8")  
Straight only  
Plate – 254 x 54mm (10" x 2 1/8")  
or 304 x 54mm (12" x 2 1/8")

**B3619**  
Thumb latch  
Handle – 203 x 63mm (8" x 2 1/2")  
Latch – 127mm (5")

**B3679**  
Hinge – 304 x 108mm (12" x 4.25")  
or 381 x 108mm (15" x 4.25")

**B1131**  
Straight or cranked  
Plate – 101 x 25mm (4" x 1")

**B3613**  
Thumb latch handle  
228 x 63mm (7 3/4" x 2 1/2")  
Latch – 197mm (7 3/4")

**B798**  
Hinge – 304 x 139mm (12" x 5 1/2")

**B1157**  
Straight or cranked  
Plate – 114 x 38mm (4 1/2" x 1 1/2")  
Bolt – 127mm (5")  
Plate – 190 x 57mm (7 1/2" x 2 1/4")  
Bolt – 203mm (8")

Straight only  
Plate – 241 x 57mm (9 1/2" x 2 1/4")  
Bolt – 254mm (10")  
Plate – 292 x 57mm (11 1/2" x 2 1/4")  
Bolt – 304mm (12")

**B1205**

**B3056**

**B1081**

**B1205**  
Door knob  
Mortice or rim  
Knob – 50mm (2")  
Plate – 85mm (3 3/8")

**B3056**  
Door knob  
Mortice or rim  
Knob – 57mm (2 1/4")  
Plate – 63mm (2 1/2")

**B1081**  
Door stud.  
Drive or screw  
Head – 19mm (3/4")

**B1550**

**B3064**

**B153**

**B1550**  
Door knob  
Mortice or rim  
Knob – 63 x 39mm (2 1/2" x 1 1/2")  
Plate – 57mm (2 1/4")

**B3064**  
Centre door knob  
Knob – 70mm (2 3/4")  
Plate – 76mm (3")

**B153**  
Door stud. Screw  
Head – 22mm (7/8")

**B1551**

**B1195**

**B1979**

**B1551**  
Door knob  
Mortice or rim  
Knob – 63 x 38mm (2 1/2" x 1 1/2")  
Plate – 67 x 50mm (2 5/8" x 2")

**B1195**  
Cupboard knob  
35mm (1 3/8")  
Rose – 38mm (1 1/2")

**B1979**  
Letters and numerals (A to Z & 0 to 9)  
76mm (3")

See glossary (p127) to understand the difference between straight and cranked.

See glossary (p127) to understand the difference between mortice and rim.



# CAST BRASS RANGE DOOR FURNITURE

B1402



B1401



B1065



B1485



B1486



B1150



B1761



B1493



B1502



**B1402**  
Escutcheon  
51 x 51mm (2" x 2")

**B1485**  
Cylinder latch pull  
85 x 50mm (3 1/2" x 2")

**B1761**  
Bell push  
121 x 32mm (4 3/4" x 1 1/4")

**B1401**  
Escutcheon  
51 x 51mm (2" x 2")

**B1486**  
Cylinder latch cover/pull  
127 x 58mm (5" x 2 1/2")

**B1493**  
Escutcheon  
73 x 25mm (2 7/8" x 1")

**B1065**  
Escutcheon  
54 x 25mm (2 1/8" x 1")

**B1150**  
Privacy bolt with vacant/engaged sign  
Latch - 64 x 25mm (2 1/2" x 1")  
Catch - 64 x 20mm (2 1/2" x 3/4")  
Disc - 70 x 70mm (2 3/4" x 2 3/4")

**B1502**  
Escutcheon  
45 x 30mm (1 3/4" x 1 1/8")

Door knocker B4896,  
centre door knob B3064  
and letter plate B1083  
in Cast Brass







## CAST BRASS RANGE WINDOW FURNITURE

**B140/  
B141**



**B144/  
B145**



**B1165**



**B1181**



**B1166**



**B1121**



**B1180**



**B171**



**B857**



**B140/B141**

Casement fastener  
Hook (141) & mortice (140). Smooth finish  
Matches 171 casement stay  
Backplate – 85 x 25mm (3 3/8" x 1")

**B1181**

Casement fastener  
Hook & mortice. Reversible  
Matches 1180 casement stay  
Backplate – 60 x 21mm (2 3/8" x 7/8")

**B1180**

Casement stay  
203mm (8"), 254mm (10"), 304mm (12")

**B144/B145**

Casement fastener  
Hook (145) & mortice (144). Smooth finish  
Matches 171 casement stay  
Backplate – 55 x 25mm (2 1/8" x 1")

**B1166**

Casement fastener. Lockable  
Available as left or right handed  
Matches 857 casement stay  
57 x 18mm (2 1/4" x 3/4")

**B171**

Casement stay. Smooth finish  
152mm (6"), 203mm (8"),  
254mm (10"), 305mm (12")

**B1165**

Casement fastener. Lockable  
Available as left or right handed  
Matches 1180 casement stay  
57 x 18mm (2 1/4" x 3/4")

**B1121**

Casement fastener  
Hook & mortice. Reversible  
Matches 857 casement stay  
Backplate – 60 x 21mm (2 3/8" x 7/8")

**B857**

Casement stay. Matches 1121 fastener  
191mm (7"), 228mm (9"),  
279mm (11"), 330mm (13")

*See glossary (p127) to understand the difference between hook and mortice plates.*



# CAST BRASS RANGE

## HOOKS, HANDLES AND LOCKS

B1174



B1173



B1129



B406



B1204



B116



B1130



B4463



B632



B3754



B679



B916



B910



**B1174**  
Coat hook - 80 x 50mm (3 1/8" x 2")  
Projection - 35mm (1 3/8")

**B1130**  
Hat and coat hook  
152mm (6")

**B679**  
Ring handle  
Rose - 63mm (2 1/2")  
Handle - 76mm (3")

**B1173**  
Coat hook - 50 x 24mm (2" x 1")  
Projection - 50mm (2")

**B4463**  
Fleur-de-lys hook  
Backplate - 54 x 54mm (2" x 2")  
Projection - 70mm (2 3/4")

**B916**  
Drawer handle  
67 x 36mm (2 3/5" x 1 7/16")

**B1129**  
Coat hook  
Backplate - 40 x 40mm (1 1/2" x 1 1/2")  
Projection - 65mm (2 1/2")

**B632**  
Ring handle  
Rose - 101mm (4")  
Handle - 101mm (4")

**B910**  
Drawer handle  
50 x 25mm (2" x 1")

**B406**  
Interior wall lamp  
Double - 263 x 276mm (10 3/8" x 10 7/8")  
Single - 263 x 148mm (10 7/8" x 5 3/4")

**B3754**  
Fanlight catch  
Smooth finish. Also in flush fitting  
127mm (5") or 178mm (7")

**B1204**  
Rim lock set  
Lock or latch. Supplied with 1550 knob,  
oval escutcheon and Wilkes spindle  
Lock body - 125 x 103 x 19mm  
(4 3/4" x 4" x 3/4")

**B116**  
Locking pivot  
For use with casement stay  
Smooth finish



# RAWNSLEY RANGE

The traditional handcrafted nature of our production process means that all listed sizes are approximate.

## RAWNSLEY RANGE



**T540**



**T541**



**WPE906**



**WPE911**



**T710**



**T940**



**T1020**



**RLC451C**



**T540**

Letter plate  
Width - 250mm (10")  
Aperture - 183 x 25mm (7 1/4" x 1")

**WPE906**

Door knocker  
Length - 228mm (9 1/2")

**T940**

Door knob  
Mortice or rim  
Knob - 56mm (2 3/16")

**T541**

Letter plate  
Width - 205mm (8")  
Aperture - 121 x 25mm (4 3/4" x 1")

**WPE911**

Door knocker  
Length - 190mm (7 1/2")

**T1020**

Drawer pull  
Width - 115mm (4 1/2")

**T710**

Door knocker  
Length - 223mm (8")

**RLC451C**

Rimlock  
Lock body - 158 x 115mm (6 1/4" x 4 1/2")

RLC451C - Complete rimlock set with T940 knob and escutcheon

RLC451 - Rimlock, lock cover and keep only (No knobs)

RLC451A - Lock cover and keep only (No knobs or rimlock)











## BEAUTIFULLY BESPOKE

With our many years' experience of casting malleable iron we have the capability to make bespoke items to replace unique items which are no longer available.

This service is typically used when renovating listed buildings. To do this we would normally require a sample of the existing product so that we can produce a new pattern from which to make a casting.

We have made bespoke fittings for a number of different places including Lincoln Castle, St Peters College and a Military College in London.



### St Peters College, Oxford Window fittings

We were asked to reproduce some casement fasteners and stays to match with the rest of the University building which could not be sourced elsewhere. Our copy of the fastener (shown above) is the black one!



### Lincoln Castle Prison cell door parts

We used the existing ironmongery to make new patterns and produce castings for the gaol.



### Personal commission Bespoke door knocker

We were asked to create a bespoke door knocker for a customer who wanted a memento of her favourite horse, using one of his actual horseshoes.

## TAKING CARE OF YOUR PRODUCTS



Metal in most forms is susceptible to corrosion. Depending upon their function our malleable iron products are subjected to either a one or two stage coating process followed by stove drying to form our durable and hard wearing traditional finish.

Over time the finish can be affected particularly where moving parts rub together. To protect your ironwork we recommend that any moving parts are lightly oiled prior to fitting with a three-in-one lubricant. We also recommend wiping the products with a lightly oiled cloth from time to time to remove any harmful deposits and reapplying a small amount of oil to moving parts. This is particularly advisable if located near the coastline.

If the protective coating is damaged or chipped in any way, a Hammerite type paint should be applied to maintain protection against corrosion.

By adopting this simple advice you can help ensure that your Kirkpatrick products will remain both functional and decorative and will last a lifetime.



## LOVINGLY REFURBISHED



Iron products are very durable and can last for many years. If a listed building is being renovated there is very often the option to re-use the original ironmongery.

However, although the actual product is still functional and strong it is often the case that it has been painted over several times and its original beauty has been lost.

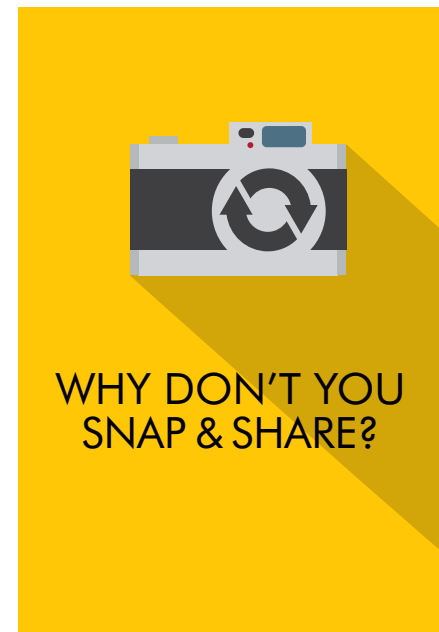
We have the capability to restore such products to their original glory by using the skills and techniques built up over 160 years.



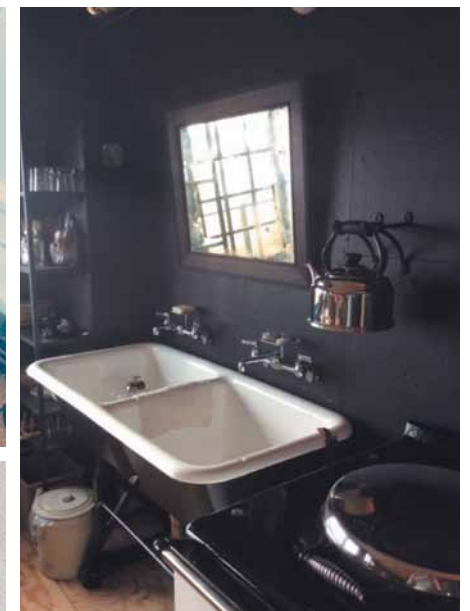


**NEED  
INSPIRATION?**

Have a peek at the  
inspiration page on  
our website for  
more ideas...



WHY DON'T YOU  
SNAP & SHARE?



We all love a good picture, taking them and admiring them too. So if you have any of our products fitted in or around your home we would love you to share your photos with us.

**Why bother?**  
Our favourite image every three months will receive some high street vouchers.

For more details please visit:  
[kirkpatrick.co.uk/inspiration/gallery](http://kirkpatrick.co.uk/inspiration/gallery)

Please email your pictures to:  
[pics@kirkpatrick.co.uk](mailto:pics@kirkpatrick.co.uk)

Or tweet your pictures to:  
[@kirkpatrickltd](https://twitter.com/kirkpatrickltd)

To find out who submitted these competition entries, check the Customer gallery page on our website.



# GET YOUR HANDS ON OUR PRODUCTS

Visit our easy to use website for a full up-to-date list of local, UK and international stockists. We keep most of our products in stock so if our distributors don't have what you are looking for we aim to deliver it to them within 72 hours.

Or browse through our extensive product range and view our image gallery to find some fresh ideas for your home or business.

Your beautiful British home deserves some beautiful British ironwork.



KIRKPATRICK.CO.UK

# GLOSSARY

## LEVER HANDLE LOCK TYPES

### Lock

A traditional key operated locking system.

### Latch

A handle operated, spring loaded tongue which 'clicks' shut, holding the door closed but not locking it.

### Bathroom

A turn and release locking system which allows the door to be locked and unlocked from one side only for privacy without the use of a key.

### Euro cylinder

A keyhole shaped lock barrel which fits into an appropriately shaped hole within the door and its handle.

### Oval lock

Very similar to a euro cylinder but with an oval rather than keyhole shaped barrel.



Lock

Latch



Euro cylinder

## THUMB LATCH TYPES CRANKED OR STRAIGHT?

### Cranked

The handle is offset to one side slightly to accommodate for a left hand or right handed door. Sometimes the actual thumb lever can be off-set also.



Straight

Cranked

## BOLT TYPES CRANKED OR STRAIGHT?

### Straight

The bolt sits on the same plane as the bolt fixing.

### Cranked

A cranked bolt is angled out like a step to allow it to fix in position at a 90 degree angle to the actual bolt.



Straight

Cranked

## DOOR KNOBS/LOCKS MORTICE OR RIM?

### Mortice

A mortice knob can be turned to operate a tongue latch within the door that slots into a mortice (hole) in the door frame, holding the door closed or releasing it.

### Rim

A rim knob sits on top of a rim latch or rim lock box, which is mounted onto the face of the door. Turning the knob operates a tongue latch inside the box which slots into a keeper on the door frame, securing or releasing the door.



Mortice

Rim

## WINDOW FASTENINGS HOOK OR MORTICE?

### Hook

A hook fastening slots into a protruding hook attached to the window frame.

### Mortice

A mortice fastening fits into a recess in the window frame.



Hook

Mortice



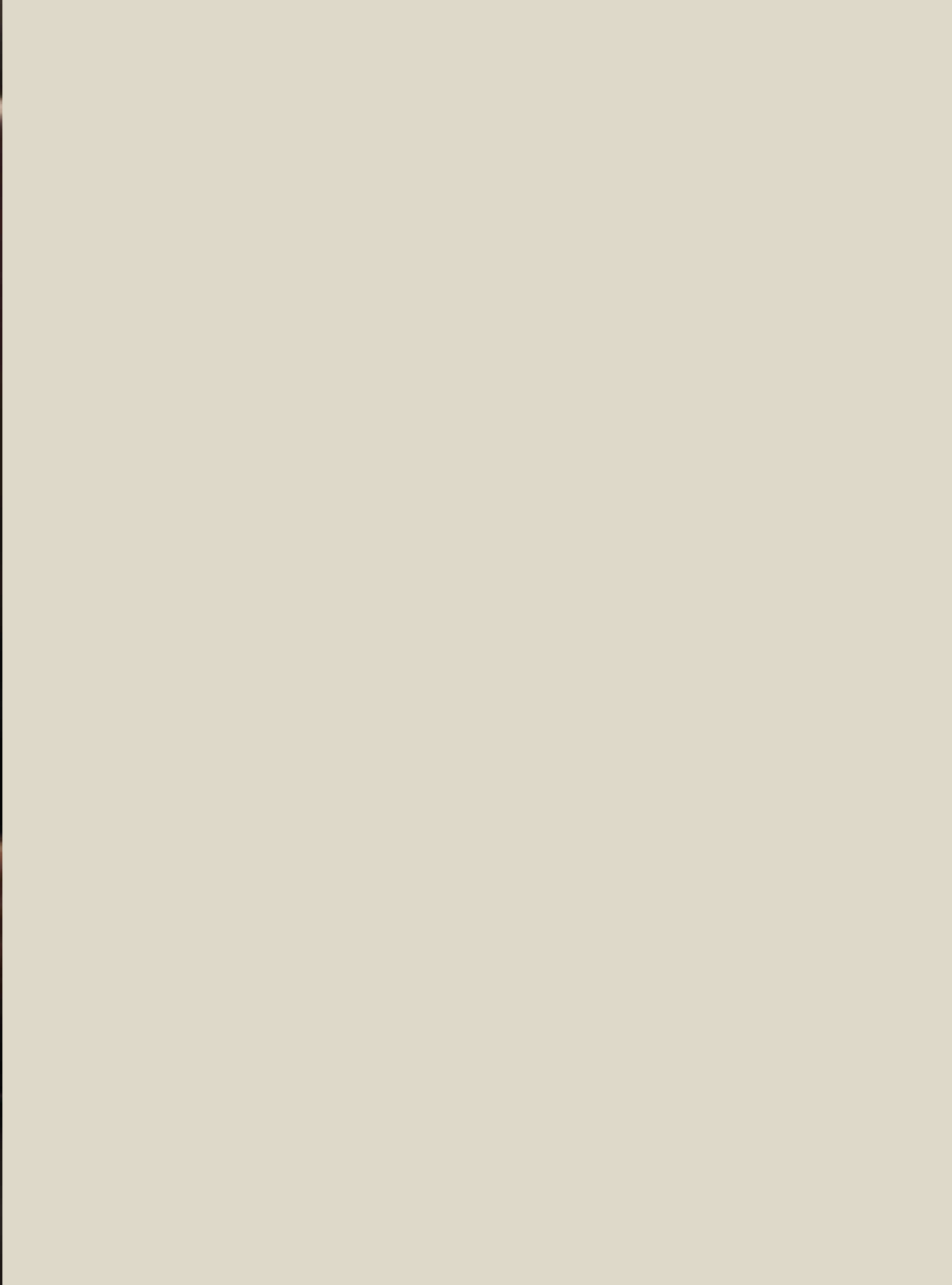
# PRODUCT INDEX

Product Code	Pg	Product Code	Pg	Product Code	Pg	Product Code	Pg	Product Code	Pg	Product Code	Pg	Product Code	Pg	Product Code	Pg
116	77	817	25	1117	50	1239	50	1778	55	2618	52	3979	31	6067	102
117	77	819	25	1119	81	1246	31	1783	55	2621	52	3981	30	6068	99
140/141	71	820	25	1120	23	1248	30	1814	21	2623	52	3998	77	6069	100
144/145	71	821	25	1121	67	1249	31	1820	21	2629	52	4013	45	6070	100
146/147	71	828	55	1121W	67	1251	30	1855	61	2630	52	4064	48	6071	99
153	58	829	23	1124	27	1253	55	1883	45	2709	71	4085	48	6080	97
171	74	830	35	1125	44	1257	36	1911	33	2723	71	4088	31	6081	97
179/180	64	832	52	1126	76	1298	76	1949	81	2758	64	4090	36	6082	99
212	82	834	79	1127	65	1312	75	1963	34	2760	64	4091	39	7000-7014	40/41
357	84	836	84	1129	82	1324	33	1976	61	2761	64	4120	76	B116	115
400/401	86	837	82	1130	82	1400	60	1977	61	2788	44	4146	63	B140/B141	113
403	86	838	67	1131	35	1401	60	1979	61	2842	89	4185	89	B144/B145	113
405	86	846	50	1132	71	1460	71	2105	45	2967	39	4195	64	B153	109
406	86	853	56	1135	81	1481	57	2155	43	2968	39	4196	64	B171	113
407	86	857	74	1137	79	1482	57	2156	63	3001	85	4269	82	B406	115
491	30	858	74	1145	27	1484	55	2157	43	3011	60	4290	65	B564	107
504	75	859	71	1146	31	1485	55	2164	43	3012	60	4305	29	B632	114
564	44	866	31	1147	27	1486	55	2167	43	3023	89	4320	28	B679	114
571	52	867	31	1149	35	1487	55	2172	43	3045	60	4321	36	B769	107
574	50	869	31	1150	39	1488	56	2173	43	3056	48	4342	89	B798	108
578	50	879	17	1154	36	1490	58	2175	58	3064	48	4359	89	B814	108
582	64	883	76	1155	35	1493	60	2176	58	3066	48	4438	31	B857	113
586	50	896	50	1156	35	1498	56	2378	84	3067	47	4463	82	B910	114
607/607A	77	902	35	1157	35	1502	58	2432	17	3072	48	4509	65	B916	114
619	23	903	35	1158	39	1503	58	2433	12	3075	49	4601	89	B926	108
620	23	905	74	1159	22	1504	60	2434	12	3258	31	4748	56	B1065	110
621	21	906/906A	67	1161	21	1507	23	2439	12	3365	71	4896	50	B1073	105
622	21	907	28	1165	68	1508	23	2440	12	3370	48	5005	89	B1081	109
632	30	911	30	1166	67	1509	23	2442	14	3372	48	5130	85	B1083	105
641	25	925	24	1167	68	1510	22	2444	14	3413	65	5131	85	B1102	105
645	22	926	24	1170	68	1511	24	2445	12	3416	65	5132	40	B1121	113
671	27	927	24	1171	72	1512	22	2448	14	3430	65	5133	40	B1129	114
672	77	932	79	1172	22	1513	22	2449	14	3431	30	5135	39	B1130	114
679	30	937	44	1173	84	1517	22	2450	12	3475	77	5136	60	B1131	108
688	27	944	52	1174	84	1528	79	2451	14	3491	84	5141	23	B1150	110
717	30	962	33	1176	68	1543	79	2454	14	3497	84	5142	40	B1155	108
720	82	967	34	1177	68	1546	36	2456	15	3498	84	5143	40	B1157	108
734	82	977	25	1180	74	1547	36	2459	17	3499	84	5144	40	B1165	113
745	82	978	25	1181	68	1549	81	2460	17	3600	89	5145	77	B1166	113
751	56	985	79	1181NVL	68	1550	47	2461	17	3603	43	5146	77	B1173	114
754	12	997	79	1182	67	1551	47	2462	17	3612	89	5147	39	B1174	114
768	63	1005	52	1183	74	1553	49	2463	18	3613	28	5148	23	B1180	113
769	63	1011	65	1184	75	1554	49	2471	17	3614	28	5170	36	B1181	113
770	63	1013	79	1185	67	1557	71	2488	14	3618	27	5182	77	B1195	109
777	61	1027	67	1190	58	1558	23	2491	15	3619	27	Cylinder 6000	18/60	B1204	115
782	50	1028	67	1192	79	1563	12	2494	15	3620	28	6050/6051	97	B1205	109
796	36	1031	72	1193	68	1578	44	2495	15	3622	29	6052/6053	97	B1401	110
797	25	1053	55	1194	81	1579	44	2496	15	3623	28	6054	18	B1402	110
798	25	1065	12/58	1195	81	1600	75	2519	14	3624	27	6056	99	B1485	110
799	21	1069	47	1196	35	1601	68	2520	14	3625	28	6057	99	B1486	110
807	43	1073	33	1197	52	1637	65	2521	17	3628	28	6058	97	B1493	110
808	47	1078	76	1203	48	1681	29	2522	18	3630	27	6059	99	B1502	110
809	22	1081	58	1204	39	1684	28	2523	17	3651	44	6060	102	B1550	109
810	21	1083	33	1205	47	1736	64	2524	18	3652	44	6061	102	B1551	109
812	36	1085	33	1206	47	1752	76	2563	15	3665	65	6062	100	B1761	110
813	89	1089	47	1207	47	1753	56	2564	15	3679	21	6063	100	B1979	109
814	21	1100	34	1217	79	1756	56	2568	15	3754	77	6064	102	B2156	107
814F	25	1102	34	1233	34	1759	56	2586	81	3900	76	6065	102	B2439	106
816	22	1103	34	1238	84	1761	56	2587	81	3960	81	6066	102	B2439SP	106





[KIRKPATRICK.CO.UK](http://KIRKPATRICK.CO.UK)





[KIRKPATRICK.CO.UK](http://KIRKPATRICK.CO.UK)

Kirkpatrick Limited  
Frederick Street, Walsall  
WS2 9NF United Kingdom

Tel +44 (0)1922 620 026  
Fax +44 (0)1922 722 525  
Email [enquiries@kirkpatrick.co.uk](mailto:enquiries@kirkpatrick.co.uk)

*May 2018. We are constantly reviewing and updating  
the range which may be subject to alteration without notice.*

